

An aerial photograph of The Ohio State University campus. The central feature is a large green lawn with a complex network of light-colored paths radiating from a central point, resembling a spiderweb or a network diagram. Surrounding the lawn are numerous brick and stone buildings, some with red roofs, and trees. The overall scene is a dense urban campus.

# Framework 3.0

THE OHIO STATE UNIVERSITY

University Senate | September 21, 2023

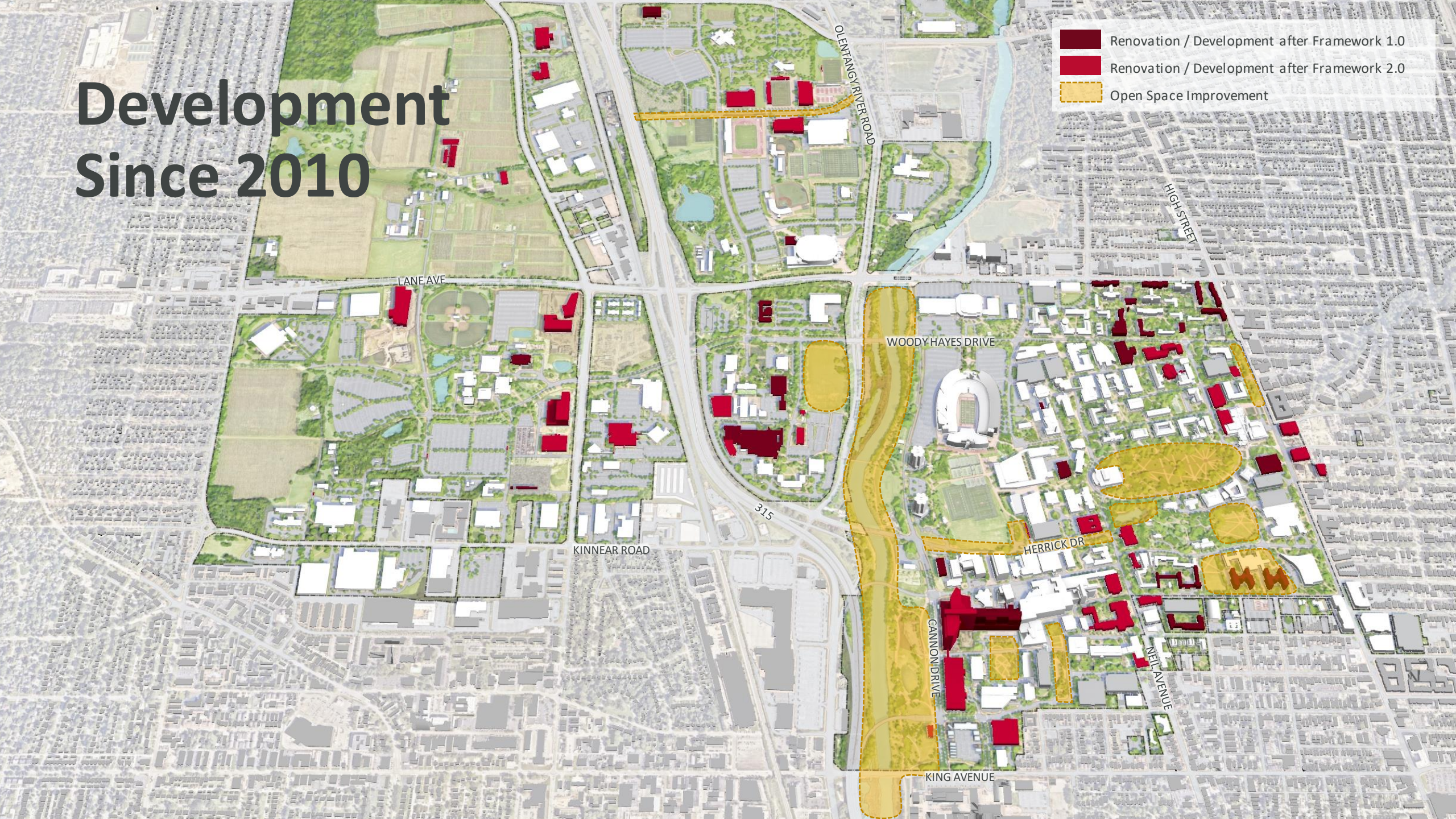


# Introduction

The image shows a multi-level interior courtyard of a modern building. On the left, a brick wall features a balcony with a red and white striped cushioned bench where three people are sitting. A large glass-walled area on the right provides a view of the courtyard and surrounding greenery. A colorful, abstract mural is visible on the right wall. The central area is a concrete platform with a glass railing. The word "Introduction" is overlaid in white text in the center.

# Development Since 2010

- Renovation / Development after Framework 1.0
- Renovation / Development after Framework 2.0
- Open Space Improvement



## PREPARE

- FEB 2022  
BOT Approval to begin  
Framework 3.0
- MAR/APR  
RFQs issued  
Interviews
- MAY  
Selected Ayers Saint Gross  
(Framework 2.0, CFAES and  
Regional Campus Framework  
Plans)

## INITIATE

- JUNE  
Kick-off Meetings  
Campus Tours
- JUL/AUG  
Virtual Listening Sessions
- SEPT  
Campus Engagement  
Draft Planning Principles  
Initial Campus Analysis
- NOV  
Leadership Updates  
Space Needs Assessment  
Campus Analysis
- DEC  
Final Planning Principles  
Concept Plan

## SCENARIOS

- JAN 2023  
Scenario Workshop #1
- FEB  
Scenario Workshop #2
- MAR  
Scenario Workshop #3
- APR  
Scenario Workshop #4

## DRAFT & FINAL PLAN

- MAY  
Draft Plan Review
- JUNE  
Cost Estimates  
Prioritization
- JULY  
Project Phasing  
Develop Tools
- AUGUST  
Final Plan
- SEPT+  
Community roll-out  
Final Deliverables

---

# Listening First

## ENGAGEMENT SUMMARY

**230+**

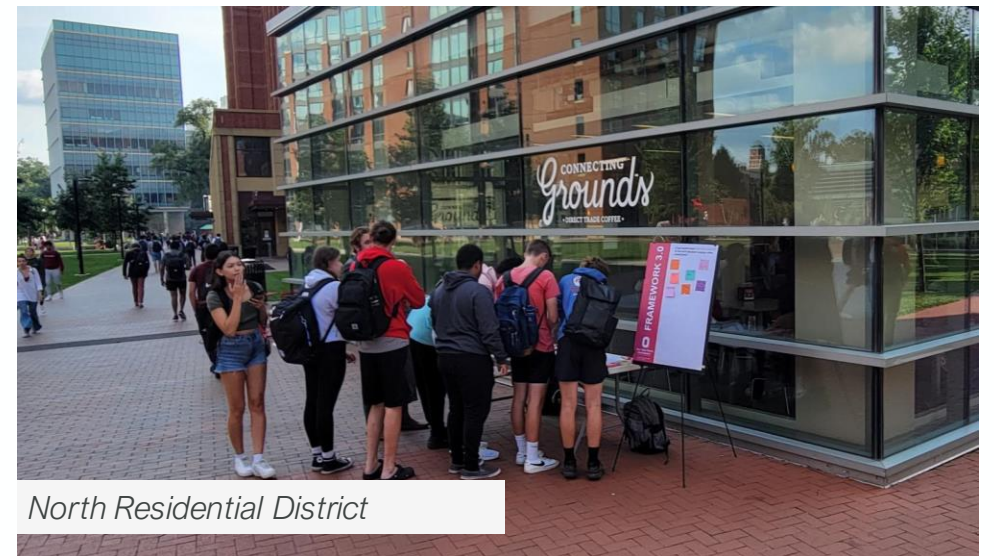
Faculty/Staff engaged through 29 listening sessions

**360+**

Students engaged through poster sessions at five on-campus sites

**4,300+**

Total individuals engaged through two separate online surveys





# Data Collection

Fall 2022 Course Schedule

Facility Index Condition Reports

Sustainability Targets

Wifi Connection Locations

University Space Inventory

University GIS Data

University BIM

Capital Plan Projects

R&D Awards

R&D Expenditures

Employee Data

Parking Data

Faculty/Staff Growth

Student Enrollment

Energy Audits

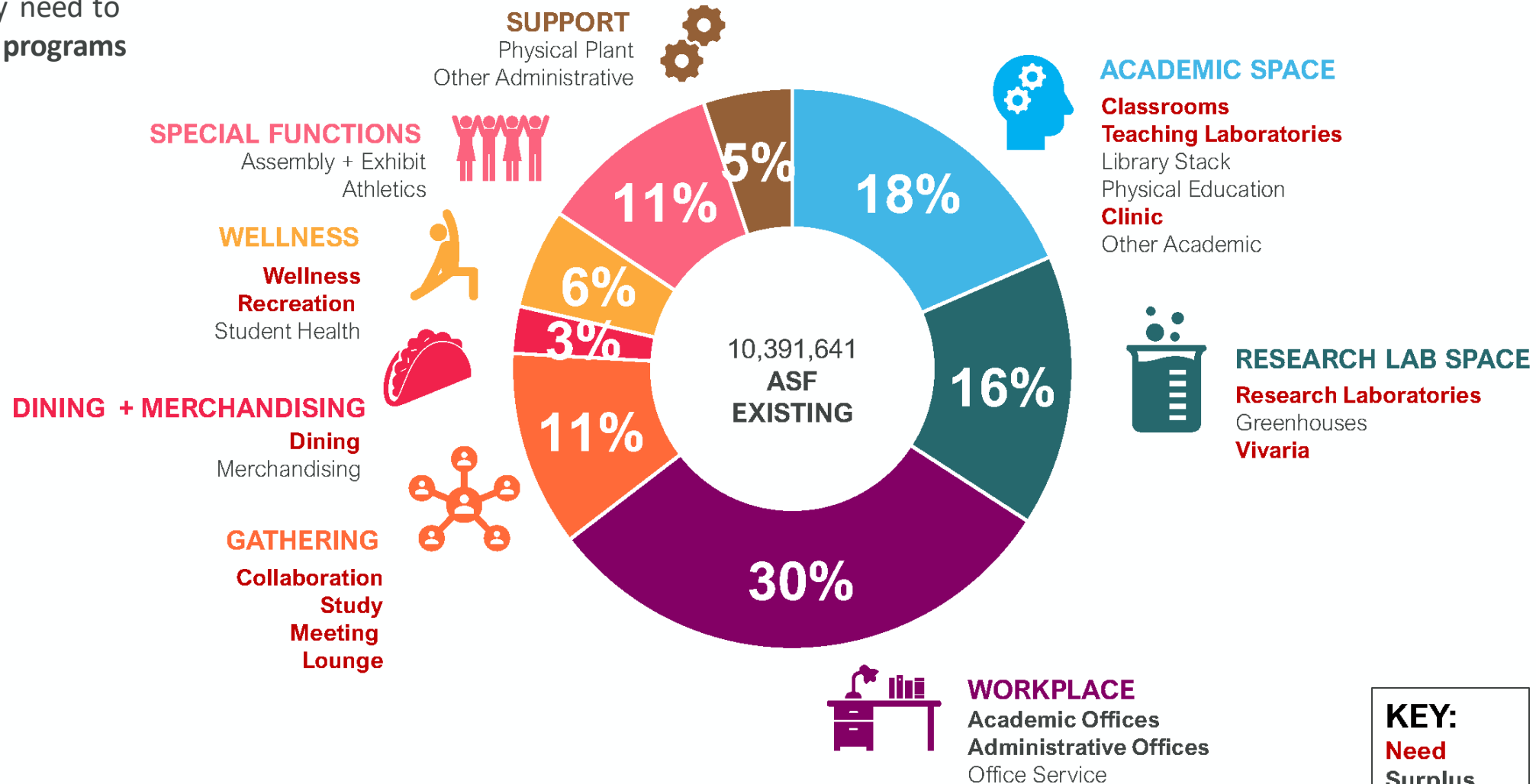
Heritage Building List

Completed Plans and Studies

Building Inventory

# Space Analysis

How much and what types of space will the university need to support its people and programs in the future?



**KEY:**  
**Need**  
**Surplus**  
 In Balance

---

# Parallel Planning



Framework 3.0

WMC Facilities Optimization Plan

Student Life Facilities Master Plan

Carmenton

CFAES Master Plan

Strategic Infrastructure Optimization Plan

Athletics District Plan



---

# What a Framework Plan is ...

- A vision
- Capacity analysis
- A living document
- Data driven
- A guide

## What a Framework Plan is not ...

- Prescriptive
- List of projects
- Capital plan
- Set in stone
- Episodic

---

# Planning Drivers for Framework 3.0



Growing Columbus Region



Innovation / Partnership Acceleration



North Knot Connection



Changing Nature of Work And Learning



Bus Rapid Transit Connector



Changing Nature of Discovery



Olentangy River Corridor Planning



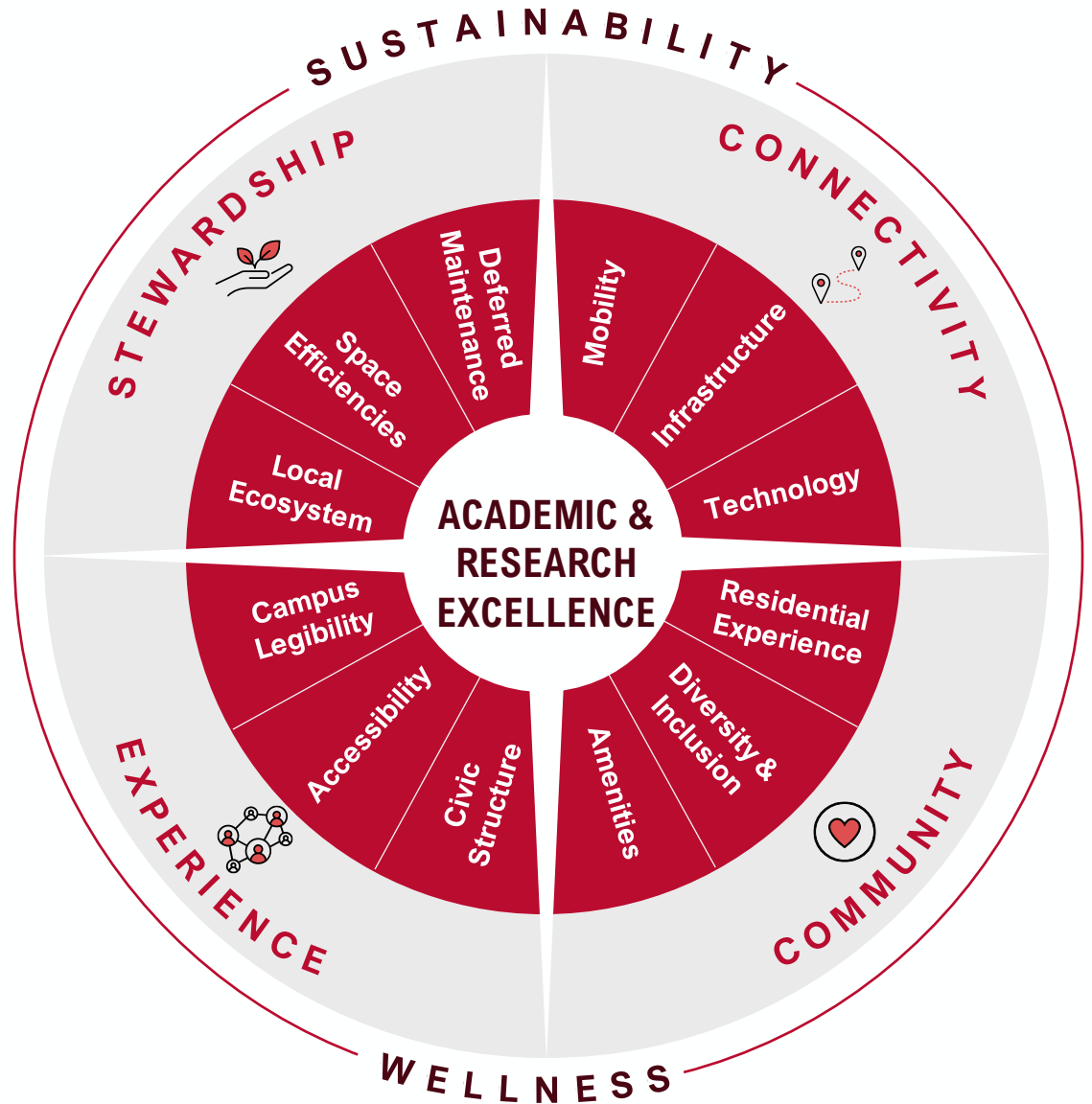
Resource Stewardship



Higher Education Landscape

# Framework 3.0 Principles

The physical campus will enhance Ohio State's position as a leading public university.



# Final Plan



# 3.0 Plan Areas

- 1 Core North
- 2 River & Midwest
- 3 Carmenton
- 4 Health Sciences & Wexner Medical Center
- 5 Core South
- 6 Wayfinding, Edges, Gateways, & Placemaking





# Core North

# Connections

- Key Roadway Connection
- Key Pedestrian Connection



# Highlighted Projects

- Key Roadway Connection
- Key Pedestrian Connection
- New Construction
- Renovation





# Vision

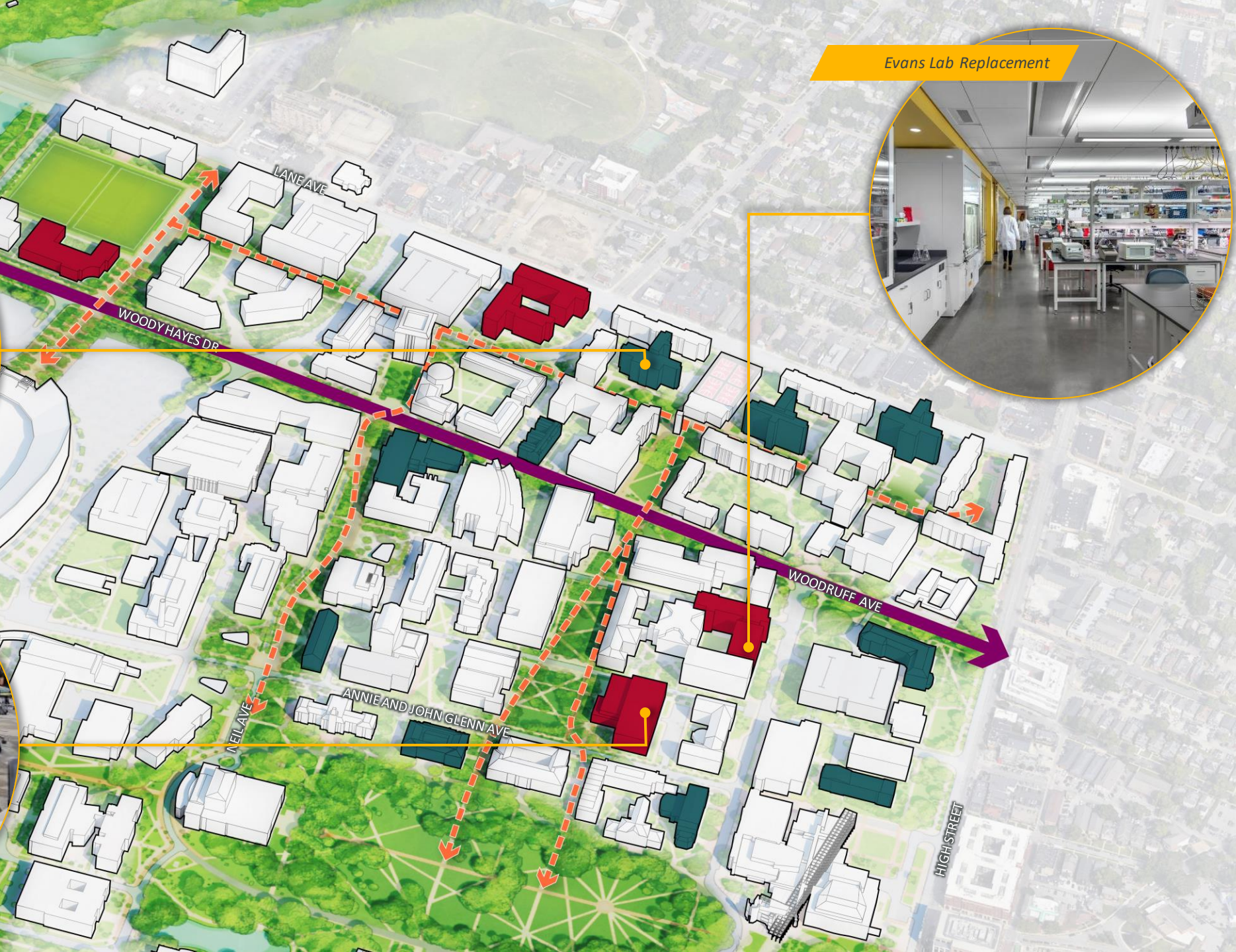
Evans Lab Replacement



Residence Hall Renovations



Classroom & Teaching Lab Building





*Hansford Quad // Before*



Future Academic Building

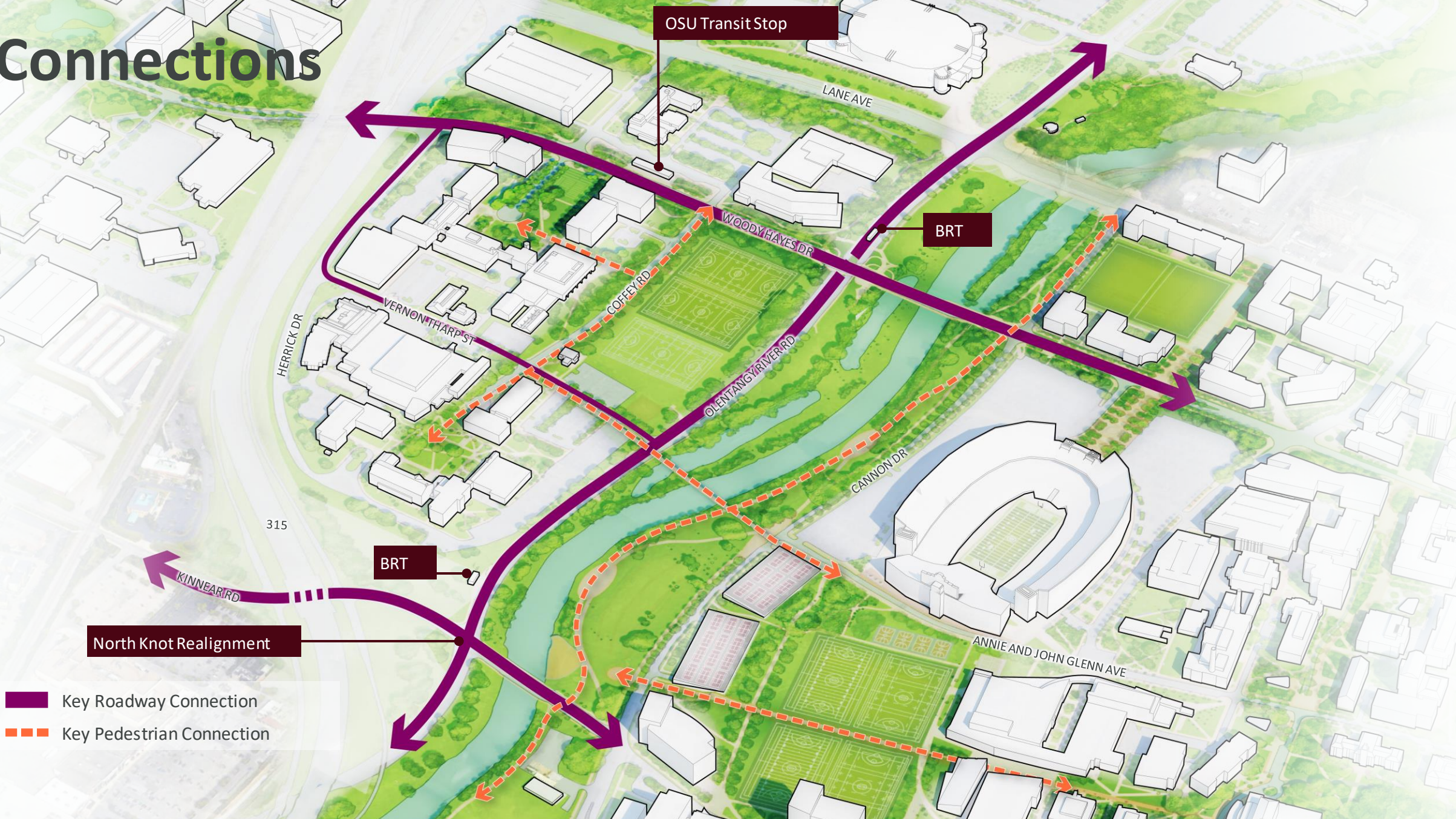
New Classroom and Teaching Lab Building

*Hansford Quad // After*



# River and Midwest

# Connections



OSU Transit Stop

BRT

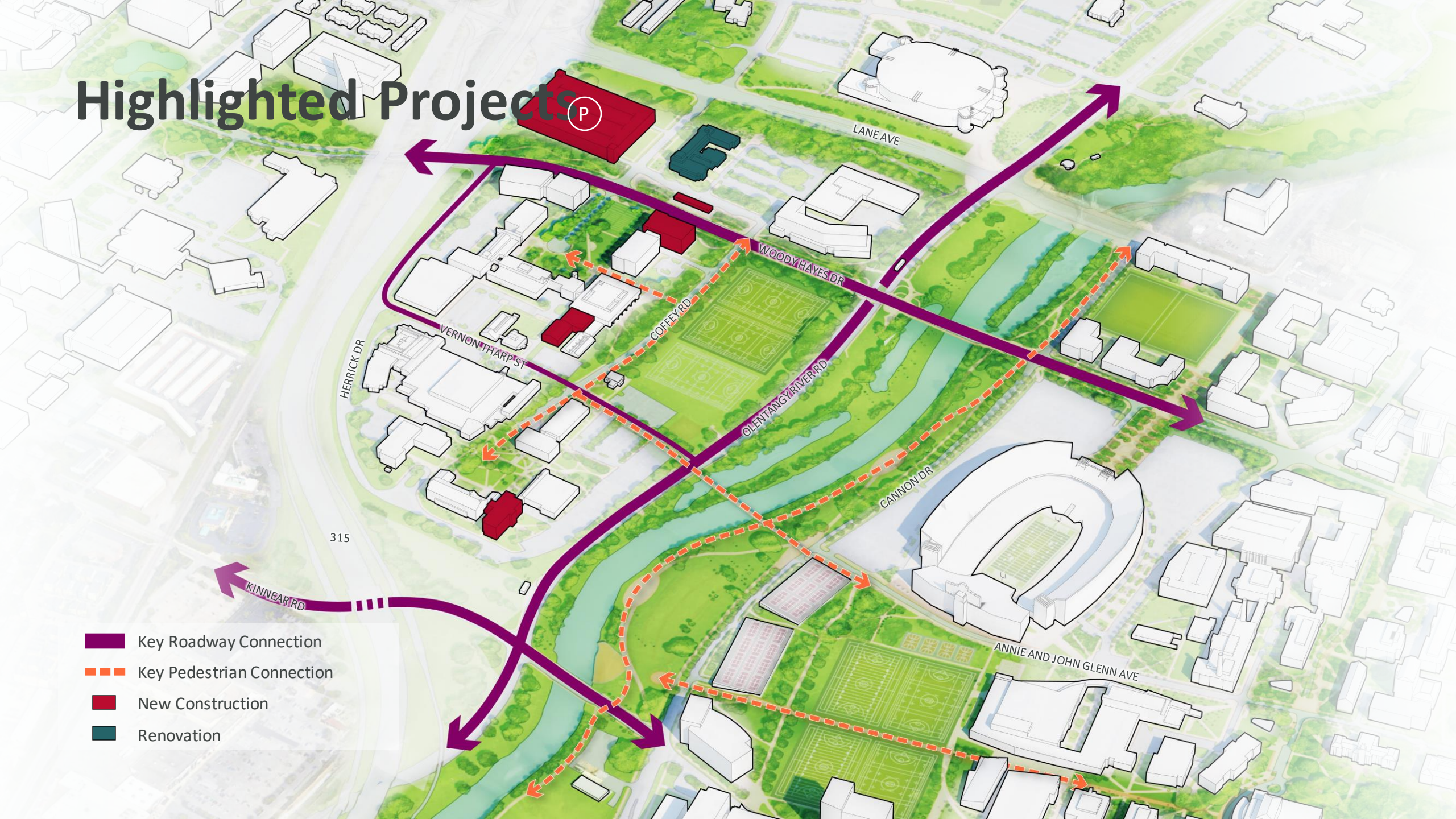
BRT

North Knot Realignment

- Key Roadway Connection
- Key Pedestrian Connection

# Highlighted Projects

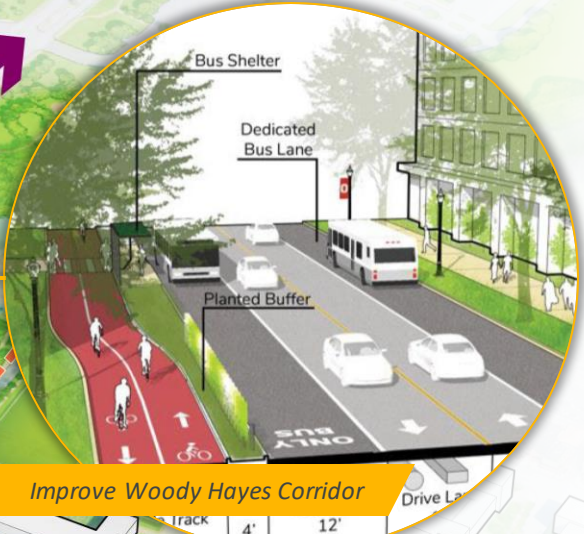
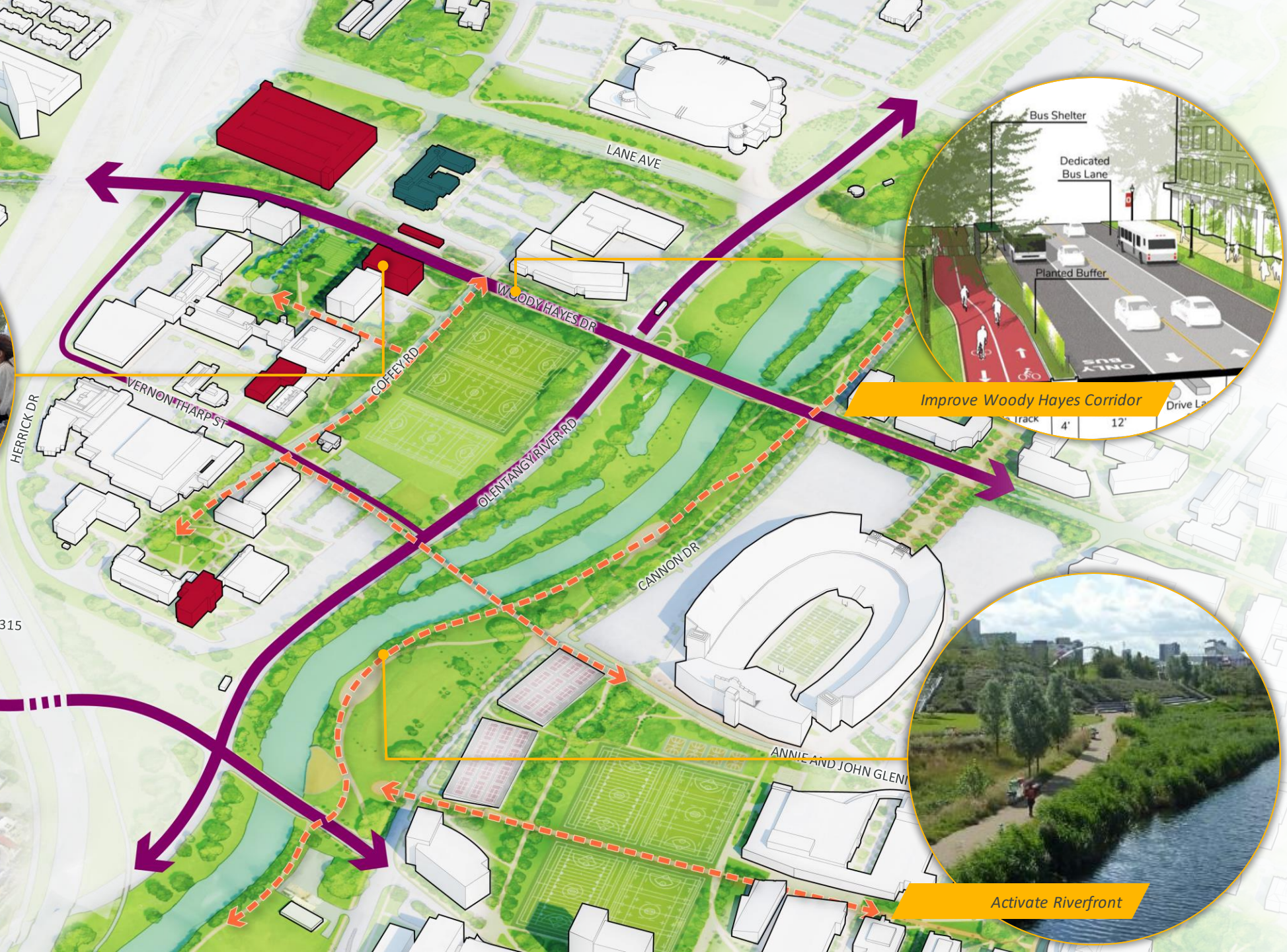
- Key Roadway Connection
- Key Pedestrian Connection
- New Construction
- Renovation



# Vision



New Teaching Lab Spaces



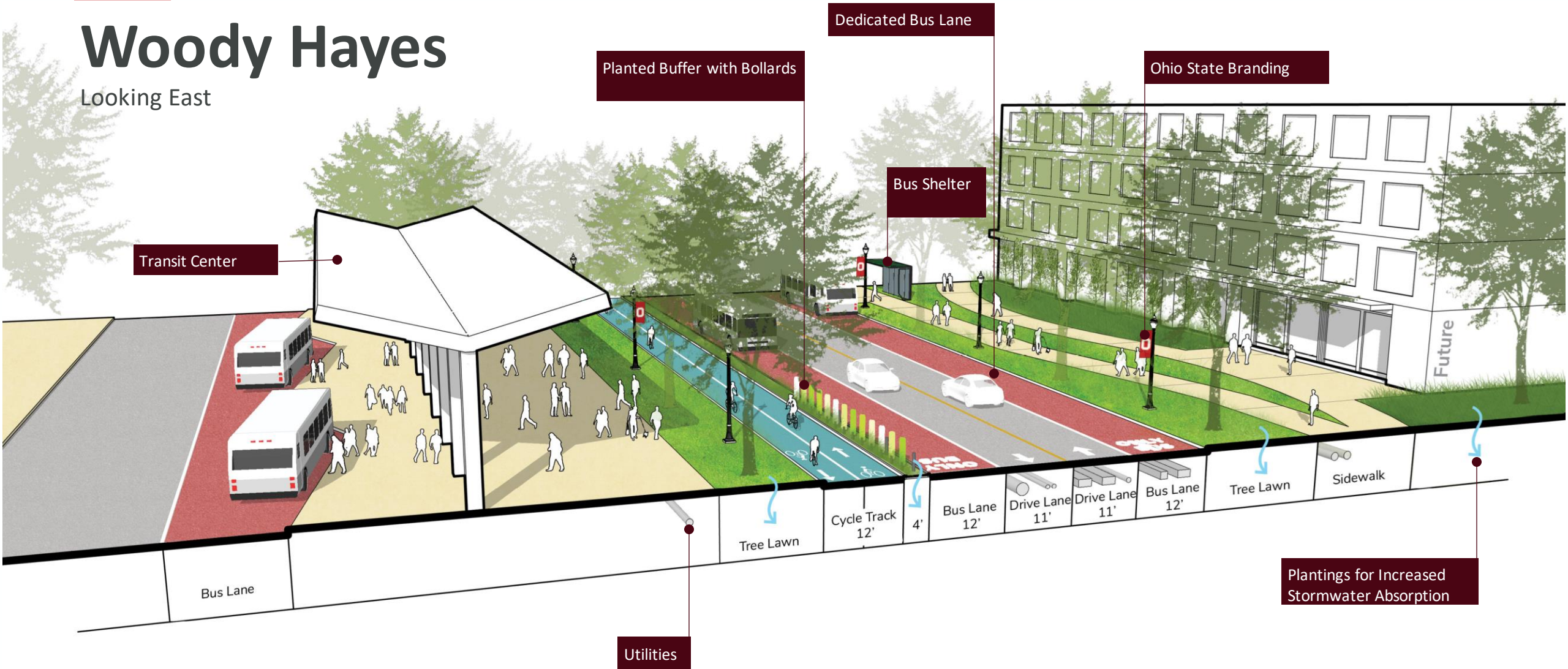
Improve Woody Hayes Corridor



Activate Riverfront

# Woody Hayes

Looking East



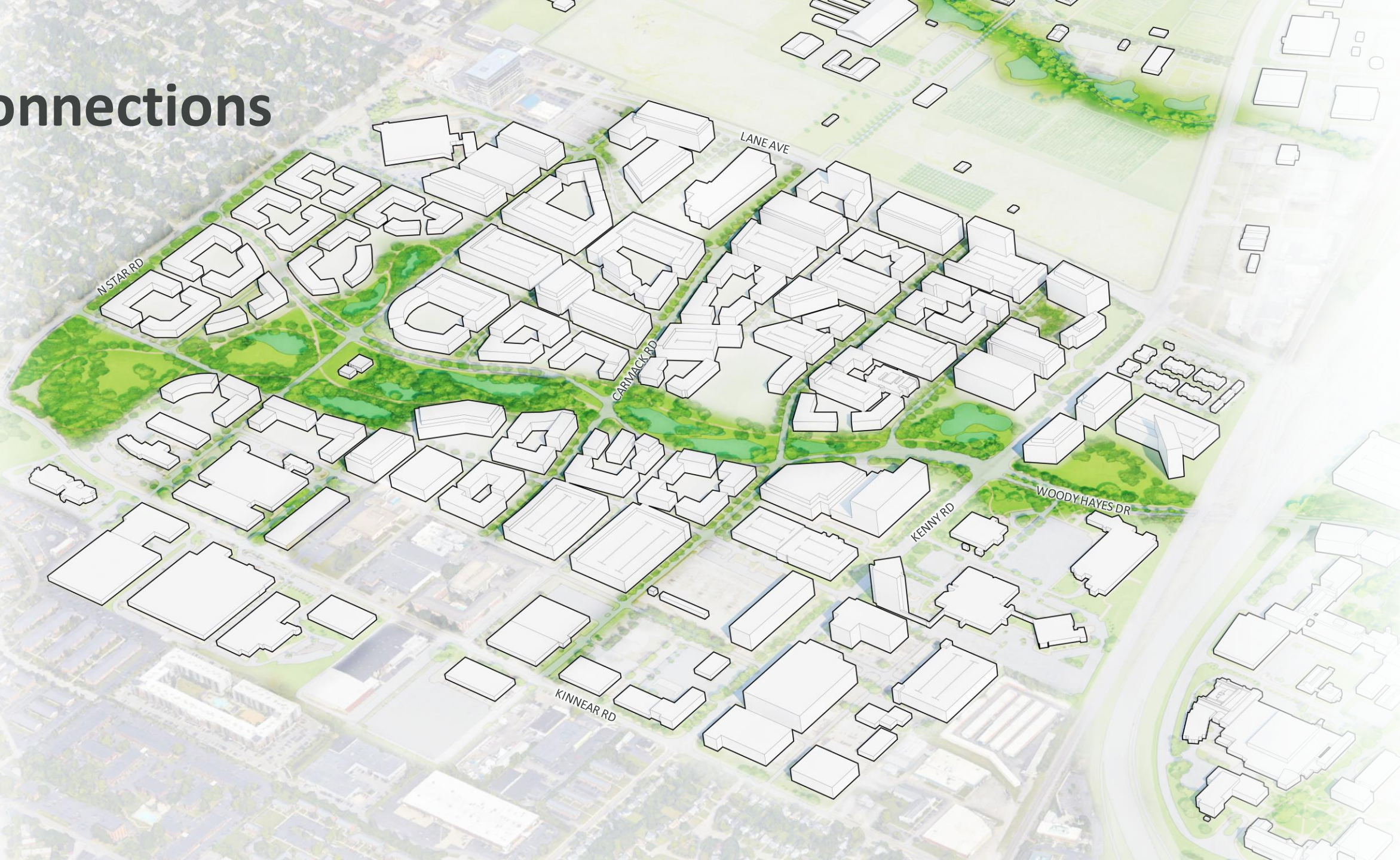
**CONCEPT**





# Carmenton

# Connections



# Connections



# Phase 1 Development



- Key Roadway Connection
- Key Pedestrian Connection
- Carmenton Phase 1

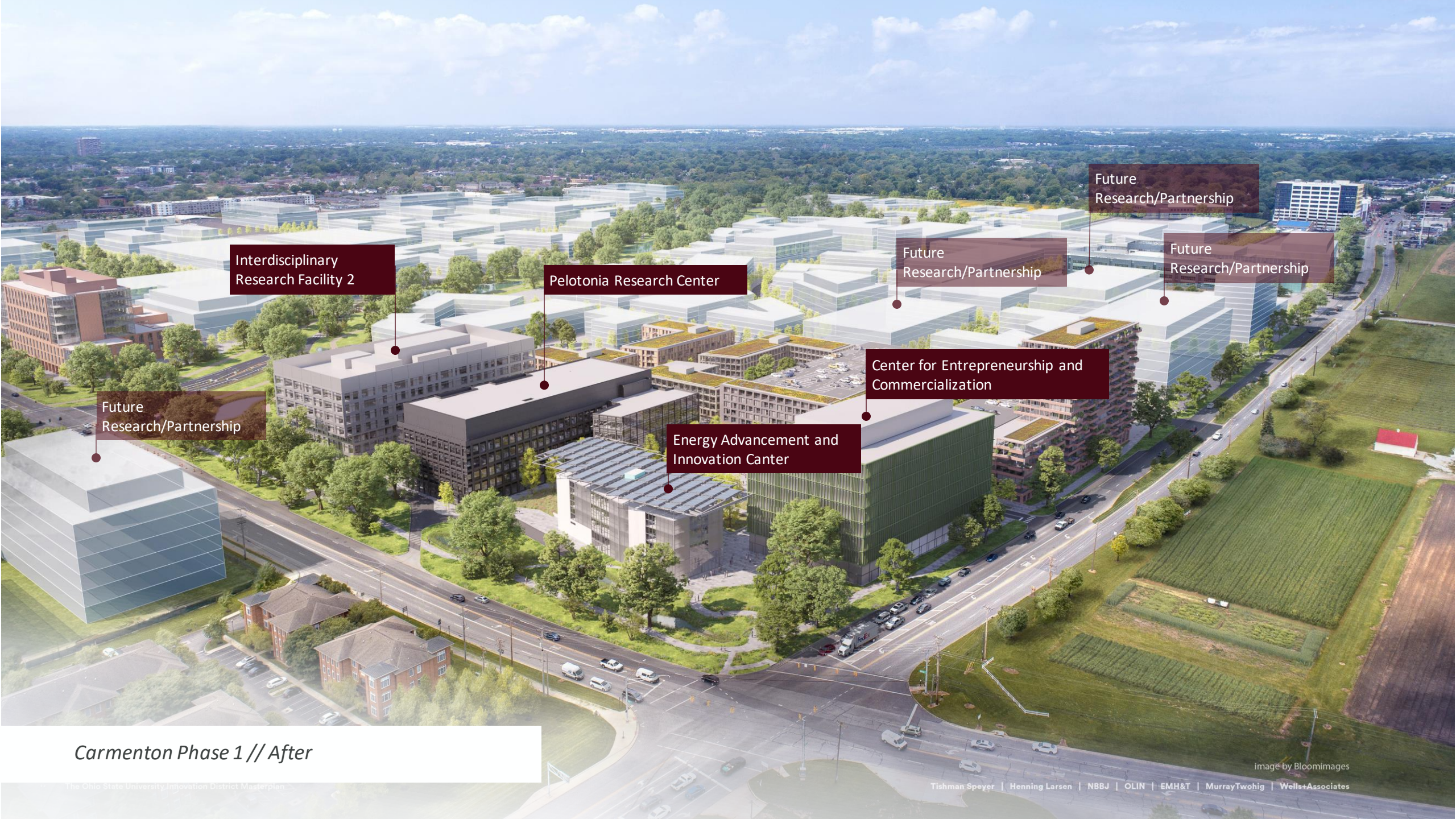
# Phase 2 Development



- Key Roadway Connection
- Key Pedestrian Connection
- Carmenton Phase 1
- Carmenton Phase 2

# Vision





Interdisciplinary  
Research Facility 2

Pelotonia Research Center

Future  
Research/Partnership

Future  
Research/Partnership

Future  
Research/Partnership

Future  
Research/Partnership

Center for Entrepreneurship and  
Commercialization

Energy Advancement and  
Innovation Center

*Carmenton Phase 1 // After*

An aerial photograph of a city, likely Columbus, Ohio, showing a dense urban landscape. A large stadium with a green field is visible in the upper right quadrant. A prominent green field, possibly a sports field or park, is located in the center. The city is characterized by a grid of streets and numerous buildings. A large highway interchange is visible on the left side. The text "Health Sciences and Wexner Medical Center" is overlaid in white, bold font in the center of the image.

# Health Sciences and Wexner Medical Center

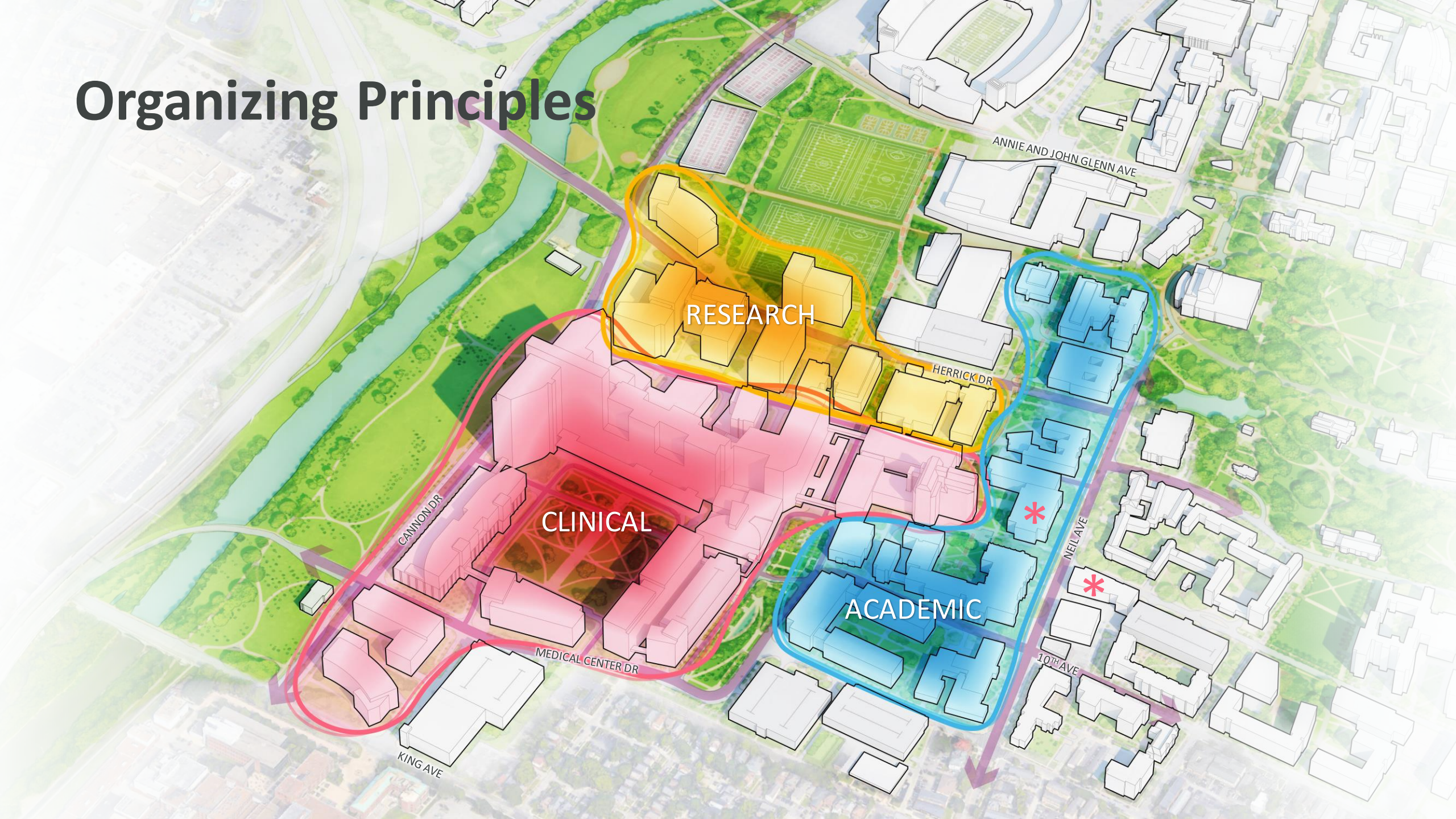


# Connections



- Key Roadway Connection
- Key Pedestrian Connection

# Organizing Principles



RESEARCH

CLINICAL

ACADEMIC

ANNIE AND JOHN GLENN AVE

HERRICK DR

NEIL AVE

MEDICAL CENTER DR

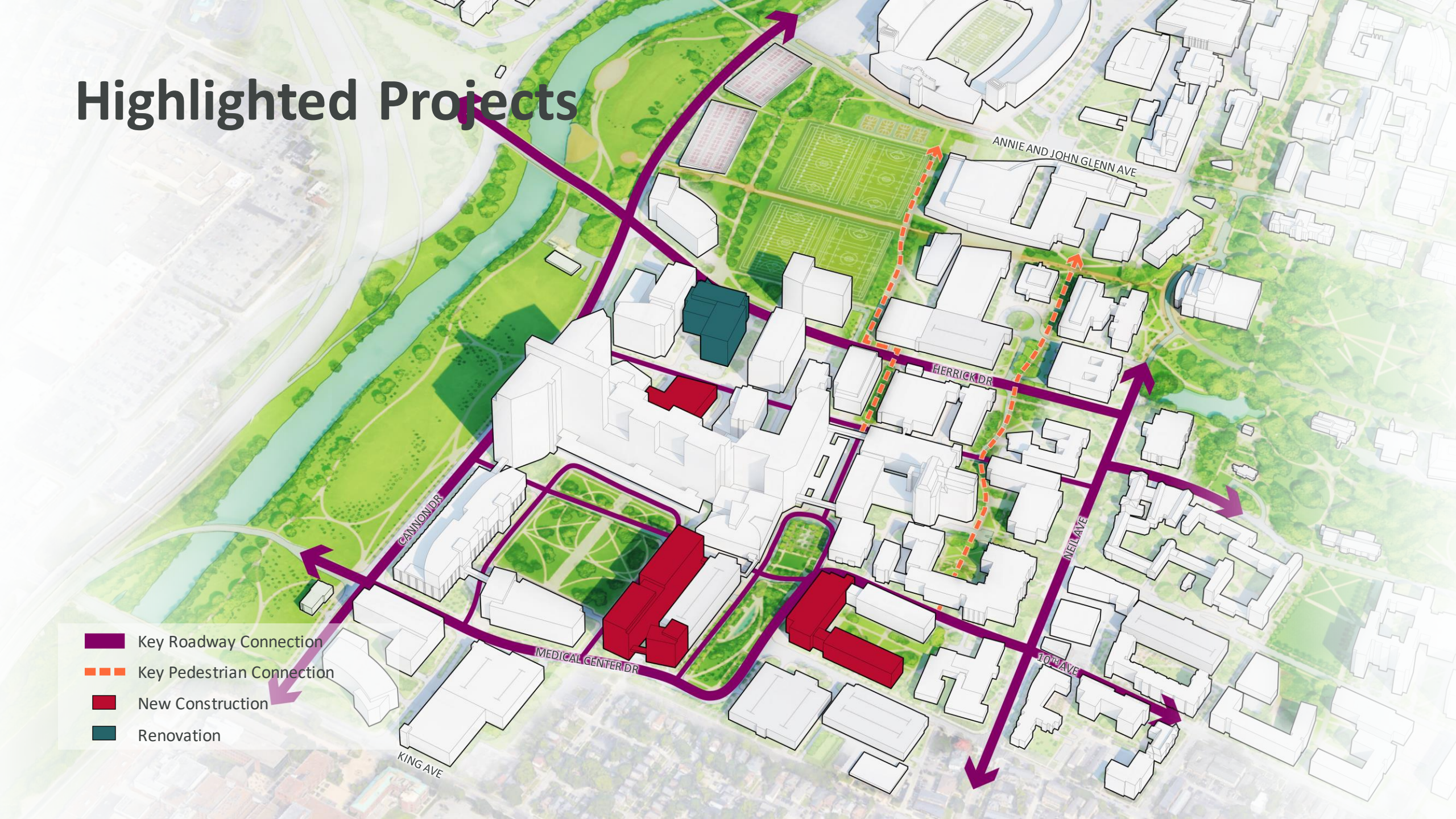
10TH AVE

CANNON DR

KING AVE

# Highlighted Projects

- Key Roadway Connection
- Key Pedestrian Connection
- New Construction
- Renovation



# Vision

Clinical Facilities



Interdisciplinary Research



Interprofessional Education, Active Learning

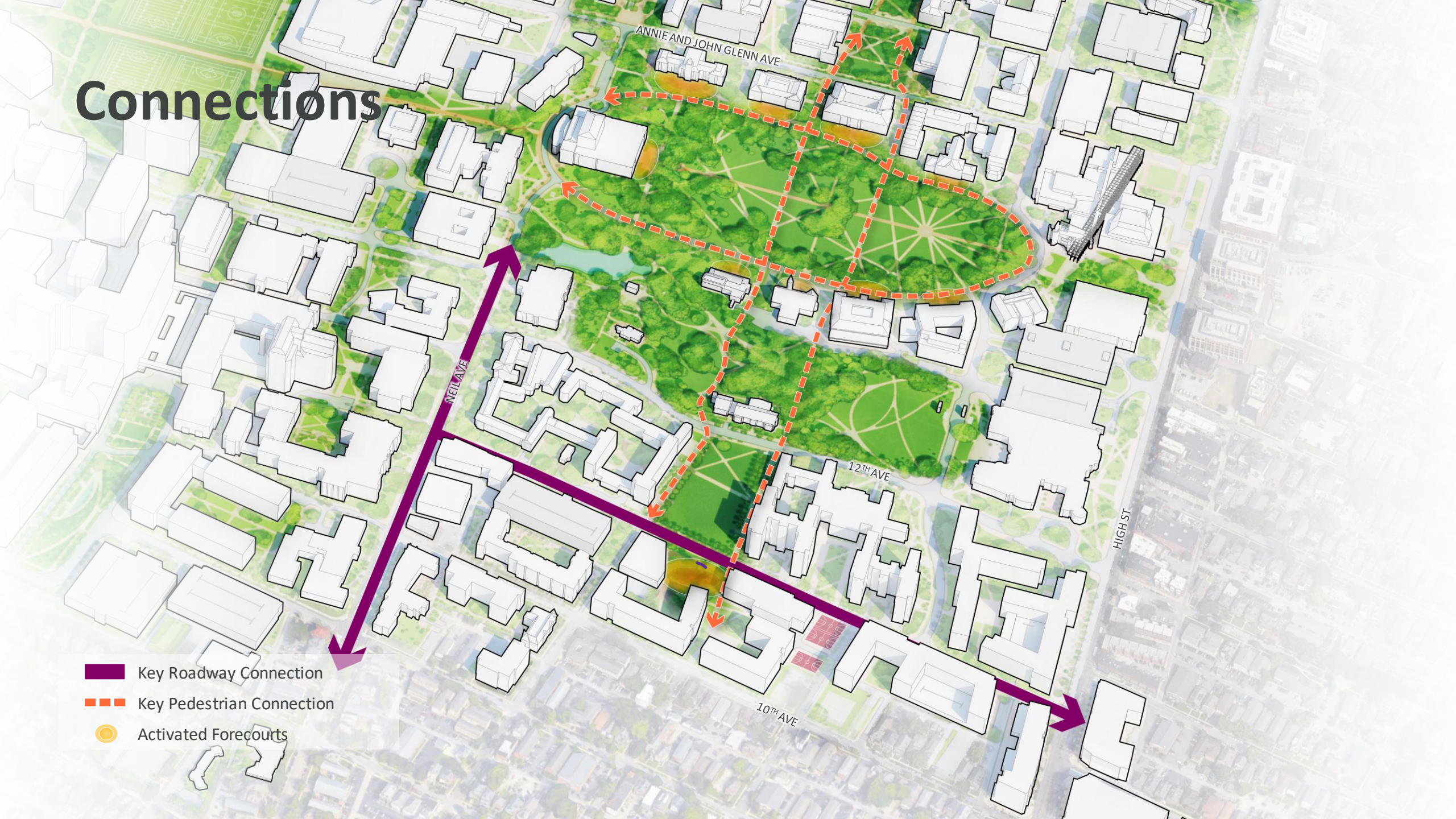


An aerial photograph of a city grid, likely New York City, showing a dense network of streets and buildings. A large, irregularly shaped green park area is visible in the center, surrounded by a grid of streets. The text "Core South" is overlaid in white in the center of the image.

# Core South

# Connections

- Key Roadway Connection
- Key Pedestrian Connection
- Activated Forecourts



# Highlighted Projects

- Key Roadway Connection
- Key Pedestrian Connection
- Activated Forecourts
- New Construction
- Renovation



# Vision



Improve Housing Quality

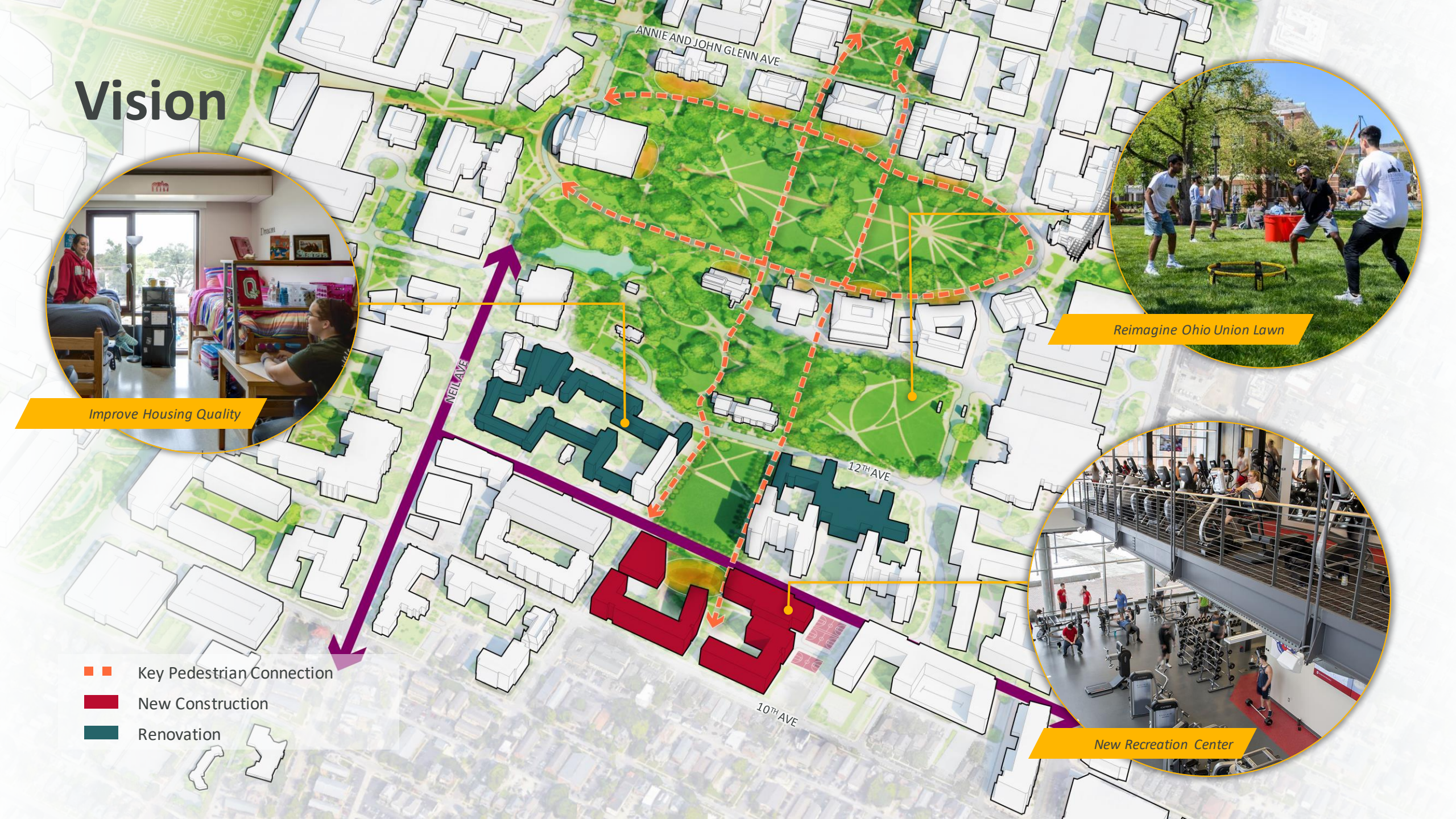


Reimagine Ohio Union Lawn



New Recreation Center

- Key Pedestrian Connection
- New Construction
- Renovation

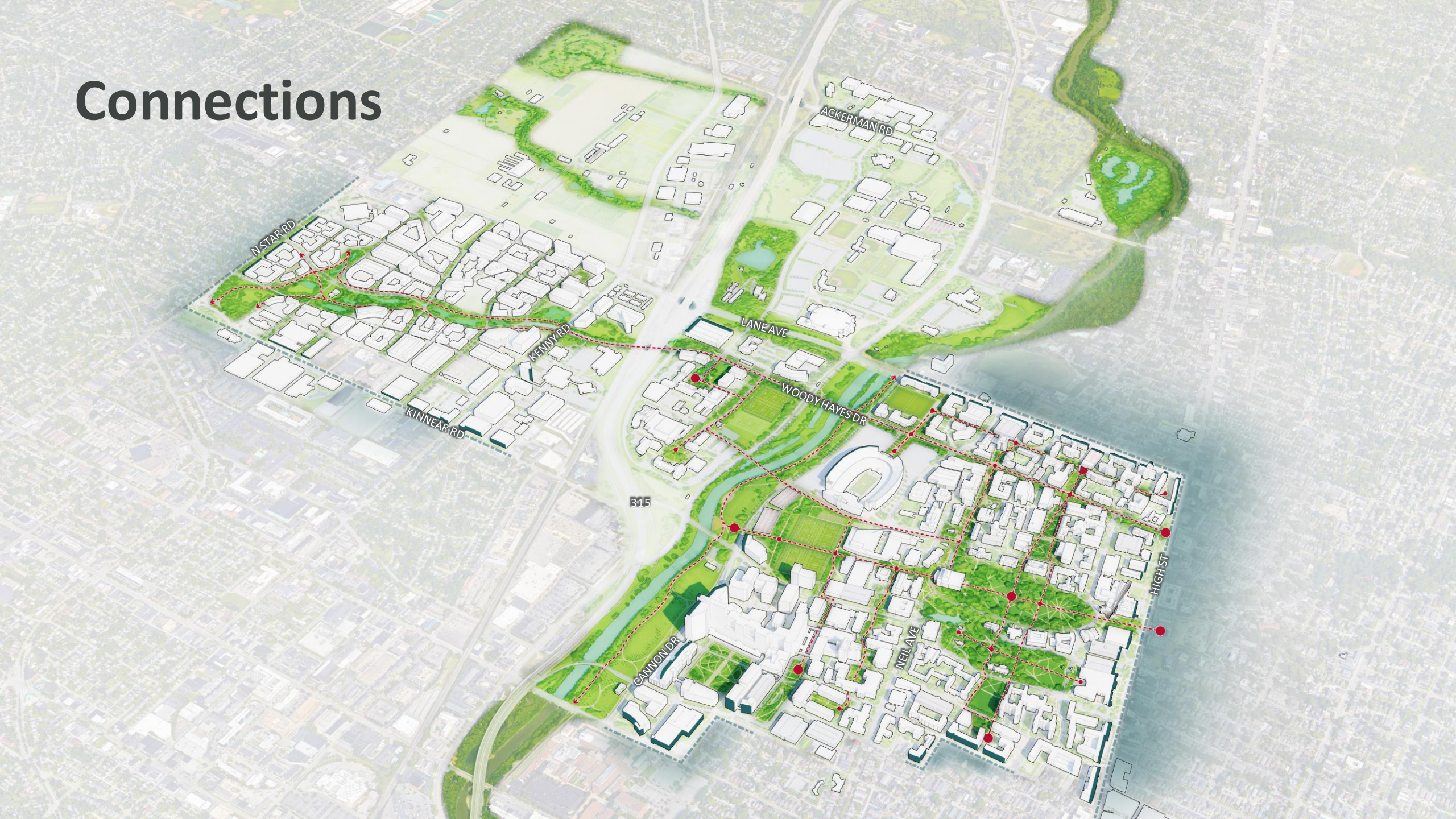






# Wayfinding, Edges, Gateways, & Placemaking

# Connections



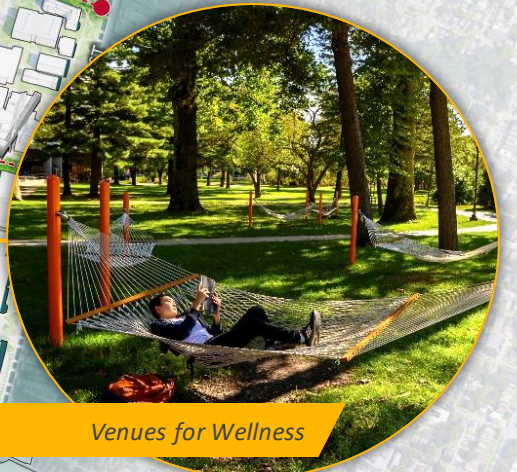
# Vision

Photo Opportunities



Signage and Branding

Venues for Wellness





*Neil Avenue // Before*



Neil Avenue // After



# Recommendations

## Community

- Increase **equity of student experience** through modernization of instructional space and on-campus housing.
- Provide updated, flexible spaces that support **teaching and research excellence**.
- Reflect the **diversity** of the university's people, places and programs on campus.

## Experience

- Implement/enhance **wayfinding** from highway to hallway.
- **Enhance arrivals** by leveraging campus branding opportunities at edges and gateways.
- Explore partnerships to supplement campus **amenities** for faculty, staff, and the campus community.

## Stewardship

- **Increase** net assignable research space. **Decrease** net assignable office space.
- Address **deferred maintenance** and **renewal** with each project.
- Achieve **alignment** between physical and strategic plans.

## Connectivity

- Develop activated public spaces that are **functional, cohesive** and **beautiful**.
- Adopt **Complete Street** concepts in roadway design.
- **Engage the river** to enhance connectivity and user experience.

## Practice

- Adopt **uniform scheduling** software to maximize utilization of classrooms and workspace.
- Implement a **space governance structure** for the university.
- Track **research metrics** to improve laboratory space allocation.
- Establish and maintain **Facility Master Plans** for all colleges and units.
- **Formalize funding model** for projects that enhance shared university spaces.



# Thank you

