

Committee on Academic Misconduct (COAM) Annual Report Summer Quarter, 2007 – Spring Quarter, 2008

Prepared by:
Dr. William Brantley, COAM Chairperson, 2007-2008
Dr. Peter W. Pappas, COAM Coordinator

The University's *Code of Student Conduct* defines academic misconduct as "any activity that tends to compromise the academic integrity of the university, or subvert the educational process" (Faculty Rule 3335-23-04[A]). The Committee on Academic Misconduct (COAM) is charged with maintaining the University's academic integrity by investigating and adjudicating "all reported cases of student academic misconduct, with the exception of cases in a professional college having a published honor code, and [in instances where a student has violated the University's *Code of Student Conduct*] deciding upon suitable disciplinary action" (University Rule 3335-5-487[B]).

COAM is composed of 18 faculty members, seven graduate students (appointed by CGS), and seven undergraduate students (appointed by USG). The work of COAM is facilitated by the Coordinator who (1) receives and processes allegations of academic misconduct, (2) notifies students of allegations of academic misconduct, (3) consults with students and faculty regarding allegations of academic misconduct, (4) schedules hearings to resolve allegations of academic misconduct, and (5) notifies students and faculty of the outcomes of these hearings.

Every student accused of academic misconduct has the right to a hearing before a panel of COAM. A panel consists of at least four members of COAM, and the rules require that each panel have at least two faculty representatives and one student representative. The panel serves as an impartial hearing body that hears evidence and testimony and determines (1) if a student has violated the University's *Code of Student Conduct* and (2) an appropriate sanction in cases where a student is found "in violation." If a student agrees with the allegations of academic misconduct and waives his/her right to a hearing, he/she may have the allegations resolved as an administrative decision. For an administrative decision, a member of COAM serves as a hearing officer and determines the sanctions.

I. SUMMARY OF CASES RESOLVED

During the 2007-2008 academic year, COAM resolved 444 cases of alleged academic misconduct. Of the cases resolved, 156 (35.1%) were resolved as administrative decisions and 288 (64.9%) were resolved as panel hearings (**Table 1**). Females and males represented 41.2% and 58.8%, respectively, of the cases resolved (**Table 2**).

Table 1.
Committee on Academic Misconduct
Summary of Total Cases Resolved and Method of Resolution
2007-2008 Academic Year

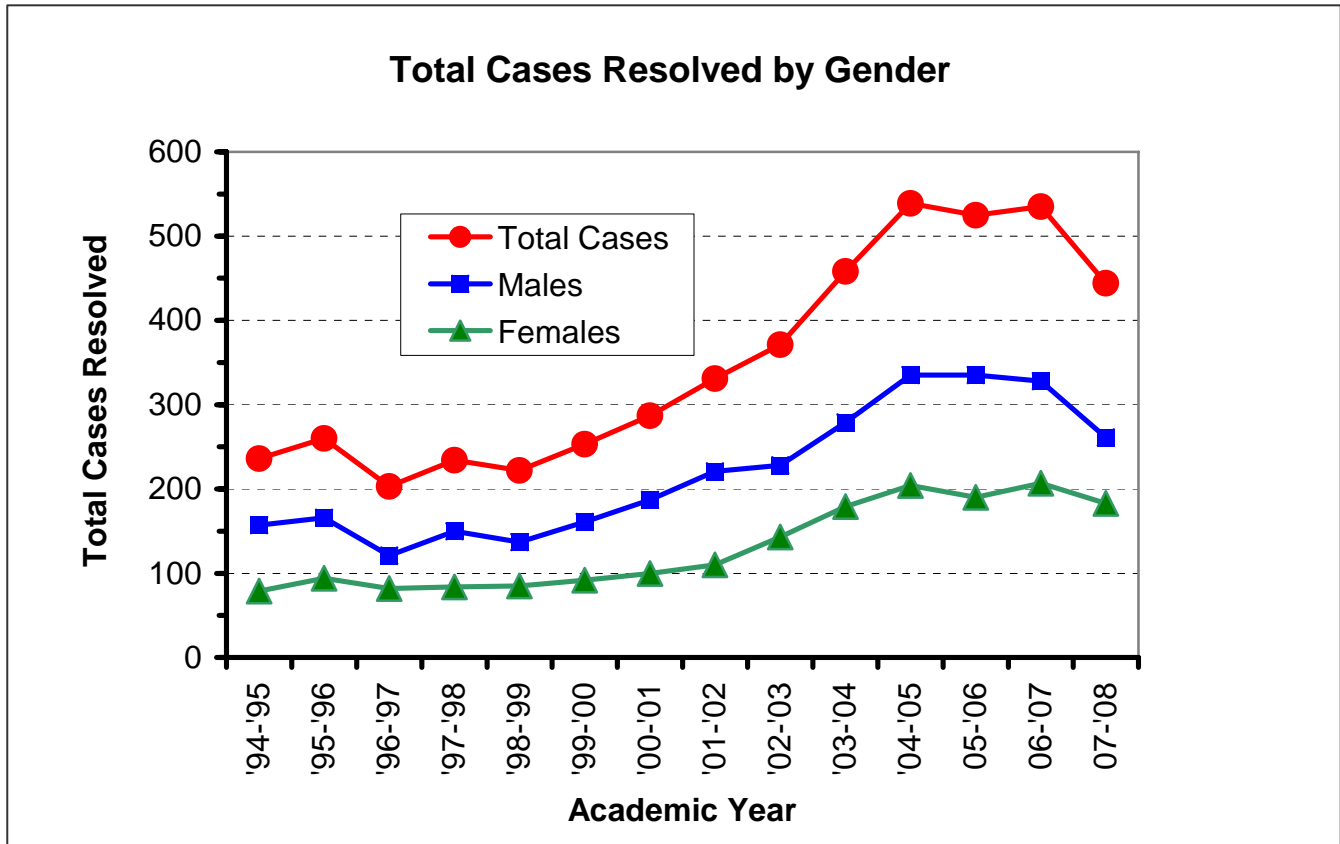
	Number of Cases	% of Total Cases
Administrative Decisions	156	35.1
Panel Hearings	288	64.9
Totals	444	100.0

Table 2.
Committee on Academic Misconduct
Summary of Total Cases Resolved and Student's Gender
2007-2008 Academic Year

Gender	Number of Cases	% of Total Cases
Female	183	41.2
Male	261	58.8
Totals	444	100.0

Figure 1 summarizes the total cases resolved by COAM and the distribution of these cases between males and females for the past 14 academic years. During this period, the number of cases resolved by COAM has increased substantially. However, the distribution of cases between males and females has not changed dramatically, with males accounting routinely for approximately 60% of the cases resolved by COAM.

Figure 1.
Committee on Academic Misconduct
Summary of Total Cases Resolved and Student's Gender
Academic Years 1994-1995 through 2007-2008



Of the 444 cases resolved by COAM this past year, 359 (80.9%) and 85 (19.1%) resulted in verdicts of “in violation” and “not in violation,” respectively, and the rates at which males and females were found “in violation” of the *Code of Student Conduct* were approximately equal (**Table 3**).

Table 3.
Committee on Academic Misconduct
Distribution of Cases Resolved Based on Students' Gender and Verdict
2007-2008 Academic Year

Gender	Students Found "Not In Violation"	Students Found "In Violation"	Total Cases	% In Violation (% of Total for Gender)
Female	38	145	183	79.2
Male	47	214	261	82.0
Totals	85	359	444	80.9

II. SUMMARY OF ACADEMIC MISCONDUCT CHARGES

When allegations of academic misconduct arise, a student often does not know or understand what he/she has allegedly done wrong. Since COAM desires that the hearing process be an educational process, the Coordinator charges the student with violating the *Code of Student Conduct* using terminology that explains the nature of the behavior that lead to the allegations. **Table 4** summarizes information on academic misconduct charges for the 2007-2008 academic year. The left column is a list of the charges used most commonly by COAM. The "Number of Students" column lists the total number of students charged with a particular violation, and the "% of Total" column lists the "Number of Students" as a percentage of the total charges (843). The last two columns list the number of students found "in violation" (Number IV) of each charge and the number of students found "in violation" of each charge as a percentage of the total number of students charged. For example, of 167 students charged with plagiarism, 145 (86.8%) were found "in violation."

Students are often charged with and found "in violation" of more than one charge. Thus, the total number of charges (843) exceeds the total cases resolved by COAM (444), and the total for "Number IV" (593) exceeds the actual number of students found "in violation" (359).

The relatively low values for the percentages of students found "in violation" of unauthorized collaboration and copying are misleading. They result because COAM often treats the charges of "copying" and "unauthorized collaboration" as mutually exclusive. In many of the cases where COAM receives information alleging that one student may have copied the work of another student, it's not clear which student (if

any) copied and whether or not there was collusion (working together in an unauthorized manner). Thus, in many of these cases, all of the students involved are charged with copying **and** unauthorized collaboration, but, if found “in violation,” they are found “in violation” of only copying **or** unauthorized collaboration.

Table 4.
Committee on Academic Misconduct
Summary of Charges for Which Students Were Found
“In Violation” of the University’s Code of Student Conduct
2007-2008 Academic Year

Charge	Number of Students	% of Total	Number IV	% IV
Plagiarism (submitting plagiarized work in fulfillment of an academic assignment)	167	19.8	145	86.8
Copying (attempting to copy) the work of another student in an unauthorized manner and misrepresenting (attempting to misrepresent) it as one's own work	200	23.7	92	46.0
Unauthorized collaboration (any instance where two or more students work together and/or share information in a manner that is unauthorized)	174	20.6	111	63.8
Failure to comply with course/program policies and/or guidelines	216	25.6	176	81.5
Submission of work not performed in a course	21	2.6	20	95.2
Possession and/or use of unauthorized materials during an examination or other course activity	13	1.5	11	84.6
Forgery	20	2.4	17	85.0
Alteration and resubmission of course materials in an attempt to change the earned credit or grade	6	0.7	6	100

Charge	Number of Students	% of Total	Number IV	% IV
Serving as or enlisting the assistance of a substitute during the completion of an academic assignment or other course activity	17	2.0	6	35.3
Other charges	9	1.1	9	100
Totals	843	100.0	593	

III. SUMMARY OF CASES BASED ON STUDENT'S COLLEGE OF ENROLLMENT AND REFEREEING DEPARTMENT

Over 20 enrollment units on campus were represented by the cases resolved by COAM during the past year (**Table 5**), but the students from four enrollment units (College of Engineering [ENG], College of Education and Human Ecology [EHE], College of Social and Behavioral Sciences [SBS], and College of Business [BUS]), when combined, accounted for nearly 50% of all cases.

Table 5.
Committee on Academic Misconduct
Distribution of Cases Based on Student's Enrollment Unit
2007-2008 Academic Year

Enrollment Unit	Total for Enrollment Unit	% of All Cases
AGR (College of Food, Agriculture and Environmental Sciences)	15	3.4
AHR (School of Architecture)	4	0.9
AMP (School of Allied Medical Professions)	13	2.9
ART (College of Art)	5	1.1

Enrollment Unit	Total for Enrollment Unit	% of All Cases
ASC (Colleges of the Arts and Sciences)	9	2.0
BIO (College of Biological Sciences)	25	5.6
BUS (College of Business)	64	14.4
CED (Continuing Education)	1	0.2
DHY (Dental Hygiene)	2	0.5
EHE (College of Education and Human Ecology)	41	9.2
ENG (College of Engineering)	44	9.9
EXP (Exploration Program)	28	6.3
GRD (Graduate School)	37	8.3
HUM (College of Humanities)	21	4.7
MPS (College of Mathematical and Physical Sciences)	15	3.5
MUS (School of Music)	4	0.9
NUR (College of Nursing)	5	1.1
PHR (College of Pharmacy)	3	0.7
SBS (College of Social and Behavioral Sciences)	71	16.0
SWK (College of Social Work)	1	0.2
USAS (Undergraduate Student Academic Services)	34	7.7
Totals	444	100.0

The cases heard by COAM during the past year originated from over 60 departments across the University (**Table 6**), with the combined cases from Computer Science and Engineering (11.3% of all cases), Chemistry (8.3%), Sociology (7.0%) and History (5.9%) accounting for nearly 40% of the total cases.

Table 6.
Committee on Academic Misconduct
Distribution of Cases Based on Referring Department
2007-2008 Academic Year

Course (Department)	No. of Cases	% of Total Cases
ACCT&MIS [Accounting and Management Information Systems]	6	1.4%
AEE [Agricultural and Extension Education]	1	0.2%
AGR EDUC [Agricultural Education]	1	0.2%
ALLI MED [Allied Medicine]	2	0.5%
ANIM SCI [Animal Sciences]	1	0.2%
ANTHROP [Anthropology]	1	0.2%
ARCH [Architecture]	1	0.2%
ART EDUC [Art Education]	5	1.1%
ARTS&SCI [Arts and Sciences]	1	0.2%
ATH TRNG [Athletic Training]	1	0.2%
AVIATION	1	0.2%
BIOLOGY	13	2.9%
BUS ADM [Business Administration]	2	0.5%
BUS-FIN [Business Administration: Finance]	1	0.2%
BUS-M&L [Business Administration: Marketing and Logistics]	8	1.8%
BUS-MGT [Business Administration: Management Sciences]	12	2.7%
C&R PLAN [City and Regional Planning]	1	0.2%
CHBE [Chemical and Biomolecular Engineering]	14	3.2%
CHEM [Chemistry]	37	8.3%
CIVIL EN [Civil Engineering]	1	0.2%

Course (Department)	No. of Cases	% of Total Cases
COMM [Communications]	8	1.8%
COMP STD [Comparative Studies in the Humanities]	3	0.7%
CS&E [Computer Science and Engineering]	50	11.3%
DANCE	3	0.7%
ECE [Electrical and Computer Engineering]	6	1.4%
ECON [Economics]	4	0.9%
EDU P&L [Education: Educational Policy and Leadership]	10	2.3%
EDU PAES [Education: Physical Activity and Education Services]	4	0.9%
EDU T&L [Education: Teaching and Learning]	3	0.7%
EEOB [Evolution, Ecology, and Organismal Biology]	8	1.8%
EN GRAPH [Engineering Graphics]	2	0.5%
ENGINEER [Engineering]	12	2.7%
ENGLISH	15	3.4%
FD SC&TE [Food Science and Technology]	1	0.2%
FM RES M [Family Resource Management]	1	0.2%
FRENCH	1	0.2%
GEOG [Geography]	5	1.1%
GEOL SCI [Geological Sciences]	10	2.3%
GERMAN	2	0.5%
HIST ART [History of Art]	1	0.2%
HISTORY	26	5.9%
HSMP [Health Services: Management and Policy]	1	0.2%
IND ENG [Industrial and Systems Engineering]	3	0.7%

Course (Department)	No. of Cases	% of Total Cases
ITALIAN	4	0.9%
LINGUIST [Linguistics]	13	2.9%
MATH [Mathematics]	3	0.7%
MATSC&EN [Materials Science and Engineering]	3	0.7%
MBA [Masters of Business Administration]	4	0.9%
MUSIC	5	1.1%
NURSING	2	0.5%
OTHER	2	0.5%
PHARMACY	1	0.2%
PHILOS [Philosophy]	9	2.0%
PHYSICS	5	1.1%
PLNT PTH [Plant Pathology]	2	0.5%
POLIT SC [Political Science]	6	1.4%
PSYCH [Psychology]	5	1.1%
PUBH-BIO (Public Health: Biostatistics)	1	0.2%
PUBH-EPI [Public Health: Epidemiology]	1	0.2%
SCANDNAV [Scandinavian]	1	0.2%
SOC WORK [Social Work]	3	0.7%
SOCIOL [Sociology]	31	7.0%
SPANISH	5	1.1%
SPH/HRNG [Speech and Hearing Science]	4	0.9%
STAT [Statistics]	2	0.5%
THEATRE	4	0.9%
USAS [Undergraduate Student Academic Services]	3	0.7%
WOM STDS [Women's Studies]	11	2.5%
YIDDISH	25	5.6%

Course (Department)	No. of Cases	% of Total Cases
TOTALS	444	100.0%

IV. SUMMARY OF CASES BASED ON STUDENT'S RANK AND COURSE LEVEL

Nearly 40% of the cases resolved by COAM during the past year were the result of allegations of misconduct in 100-level courses. Progressively fewer cases resulted from allegations in progressively higher-level courses (**Table 7**).

Table 7.
Committee on Academic Misconduct
Distribution of Cases Based on Course Level (Number)
2007-2008 Academic Year

(N/A in the following table refers to those cases in which the alleged academic misconduct did not take place in a course in which the student was enrolled.)

Course Level	Cases	% of Total
0-99	0	0.0
100-199	163	36.7
200-299	81	18.2
300-399	67	15.1
400-499	25	5.6
500-599	44	9.9
600-699	11	2.5
700-799	37	8.3
800-899	11	2.5
900-999	2	0.5
N/A	3	0.7
Totals	444	100.0

Although 100-level courses accounted for nearly 40% of the allegations of academic misconduct, the “rate” of allegations (i.e., the number of cases based on the total numbers of students enrolled) was actually highest in 300-level courses (**Figure 2**).

Figure 2.
Committee on Academic Misconduct
Distribution of Cases Based on Course Level and Enrollment
2007-2008 Academic Year

(For each course-level, the total number of cases for that level was divided by the total number of students enrolled in all courses for that level, and the resulting number was multiplied by 1000. Enrollment data for Autumn Quarter, 2007, were obtained from the Registrar’s Office and used for these calculations.)

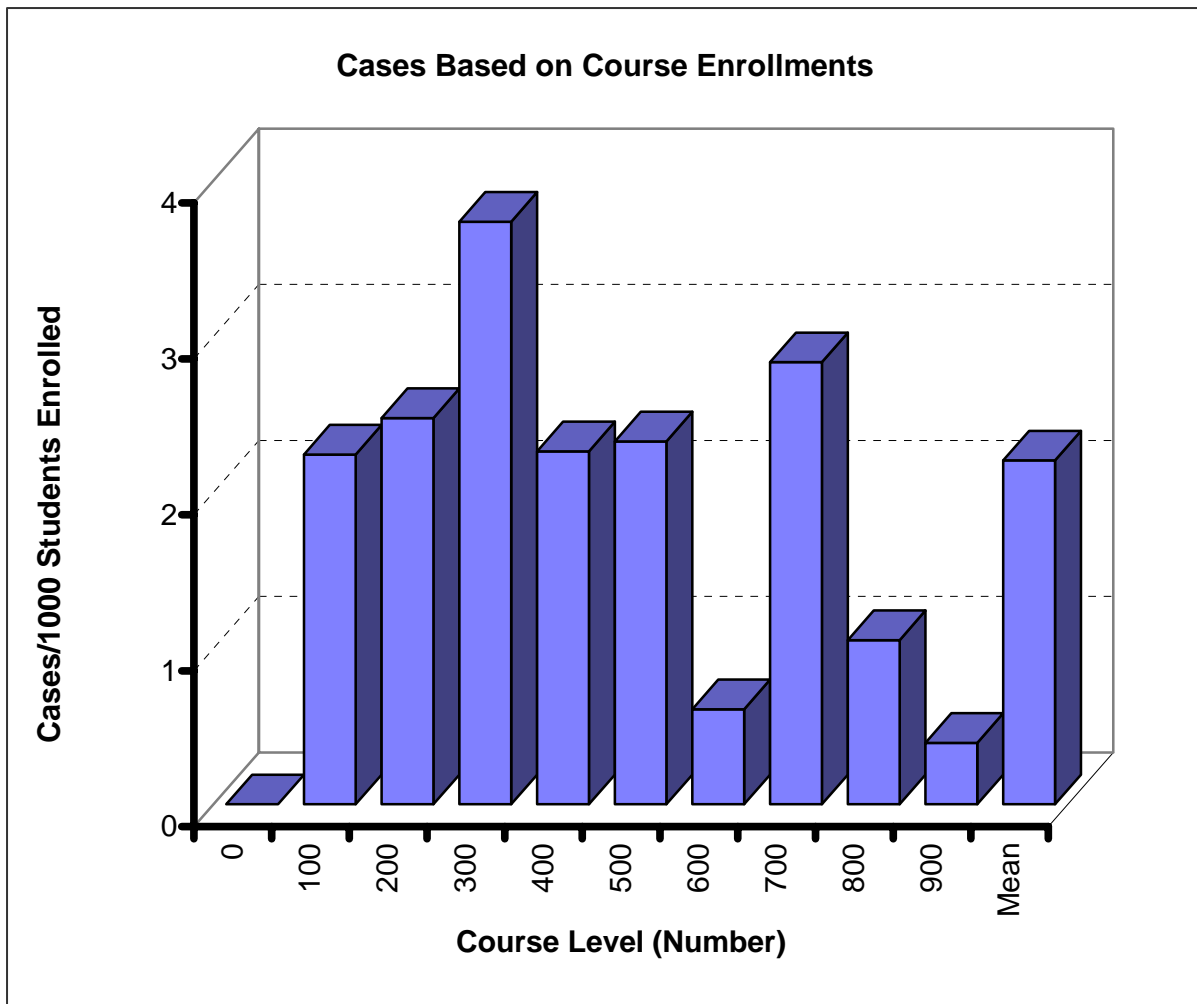


Table 8 summarizes the cases resolved for undergraduate students only (i.e., ranks 1 through 4). The data demonstrate that students of progressively higher class ranks tended to be charged with academic misconduct in progressively higher level courses. For example, almost all cases involving rank 1 students occurred in 100 and 200-level courses (62 of 71 cases = 87%), while most of the cases involving rank 4 students occurred in courses at the 300-level and above (76 of 119 cases = 64%).

Table 8.
Committee on Academic Misconduct
Distribution of Cases Based on Student Rank and Course Level
2007-2008 Academic Year

(The following table includes data for only ranks 1, 2, 3, and 4 students who were charged with academic misconduct in a formal course. Thus, the data in this table represent 403 of the 444 total cases resolved during the past academic year.)

Level	Class Rank				Totals
	1	2	3	4	
0	0	0	0	0	0
100	44	46	48	23	161
200	18	29	14	20	81
300	7	24	21	15	67
400	1	4	7	13	25
500	1	1	16	22	40
600	0	1	1	8	10
700	0	0	1	18	20
Totals	71	105	108	119	403

The data in **Table 8** show that the numbers of cases were higher among higher ranked students, with the highest number of cases involving rank 4 (senior) students. However, when the data were calculated as rates (i.e., calculated on the basis of the number of students enrolled for each class rank), the highest rate of cases involved rank 3 students (Fig. 3).

Figure 3.
Committee on Academic Misconduct
Distribution of Cases for Undergraduate Students
Based on Class Rank and Enrollment.
2007-2008 Academic Year.

(For this Figure, the number of cases for each rank [see Table 8] was divided by the total enrollment for that rank and then multiplied by 1000. The “All Ranks” bar represents the mean value for ranks 1 through 4. Enrollment figures for the Autumn Quarter, 2007, for each rank were obtained from the Registrar’s Office and used to calculate these data.)

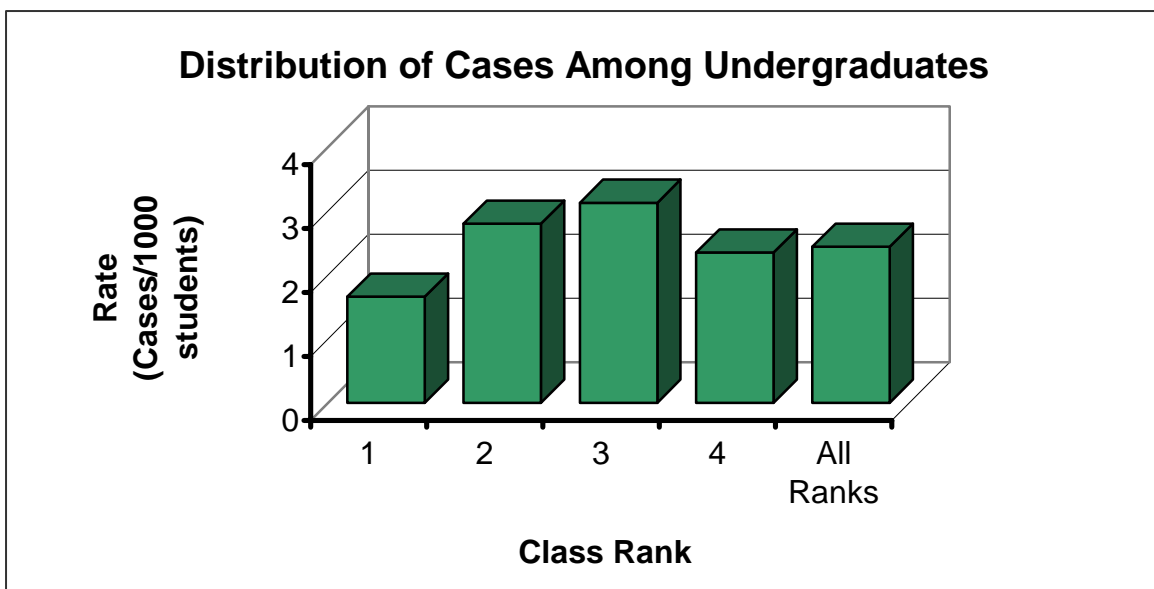
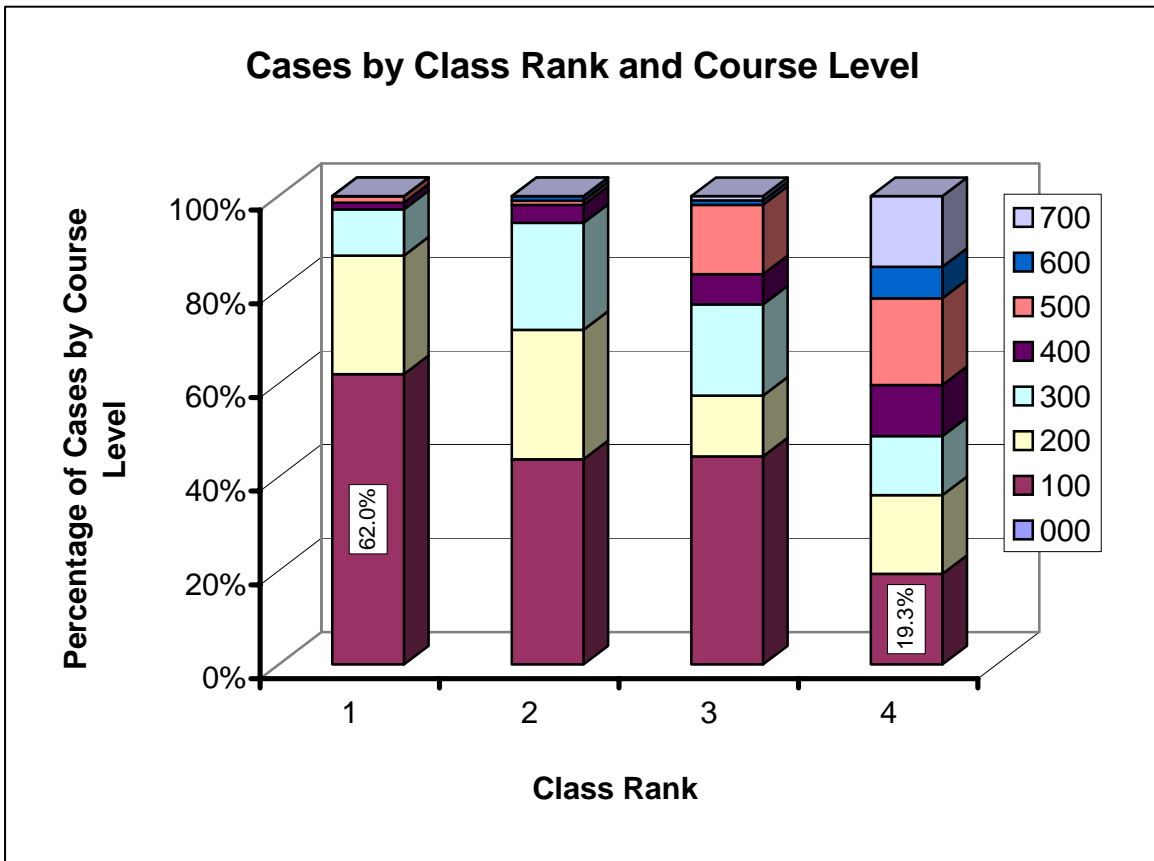


Figure 4 summarizes the distribution of cases among different class ranks and course levels. This figure demonstrates clearly that a majority of allegations involving rank 1 occurred in 100-level (62.0%) courses. Also notable is the observation that 100-level courses accounted for a high percentage of academic misconduct cases involving rank 4 students (19.3%).

Figure 4.
Distribution of Cases by Course Level and Student's Class Rank
2007-2008 Academic Year

(For this Figure, the data in **Table 8** for each course level within each class rank were calculated as a percentage of the total cases for that class rank, and the data for the course levels within each class rank were plotted as cumulative percentages.)



VI. Summary of Disciplinary and Grade Sanctions

When COAM finds that a student has violated the University's *Code of Student Conduct*, COAM imposes sanctions. The sanction always includes a disciplinary component, and, in a majority of cases, a grade-related component.

The disciplinary sanctions imposed by COAM and the numbers of cases involved are summarized in **Table 9**. As these data demonstrate, most students found in violation of the *Code of Student Conduct* received a sanction of "disciplinary probation."

Table 9.
Committee on Academic Misconduct
Summary of Disciplinary Sanctions
2007-2008 Academic Year

(Of the 444 cases heard during the 2007-2008 Academic Year, 359 resulted in a finding of "In Violation," and only these resulted in a disciplinary sanction.)

Disciplinary Sanction	Number of Cases	% of Cases
Formal reprimand	26	7.2
Disciplinary probation (range = 1 quarter to "until graduation")	282	78.6
Suspension (range = 1 to 4 quarters)	43	12.0
Dismissal	8	2.2
Totals	359	100.0

The grade sanctions imposed by COAM and the numbers of cases involved are summarized in **Table 10**. As these data demonstrate, most students found "in violation" of the University's *Code of Student Conduct* fail the course in which the misconduct occurred.

Table 10.
Committee on Academic Misconduct
Summary of Grade Sanctions
2007-2008 Academic Year

(Of the 444 cases heard during the 2007-2008 Academic Year, 359 resulted in a finding of "In Violation." In 17 of these cases, no grade sanction was authorized for the following reasons: a grade sanction was not applicable [4 cases]; no grade sanction was authorized [3 cases]; the student withdrew from the course prior to resolving the allegations [10 cases].)

Grade Sanction	Number of Cases	% of Cases
None	17	4.7
Authorization for a "0" on the assignment	45	12.5
Authorization for a "0" on the assignment and then a reduction in the student's final grade by one full letter grade	68	19.0
Authorization for a final grade of "E" in the course	217	60.5
Other	12	3.3
Totals	359	100.0

As noted above, when a student is found "in violation" of the University's *Code of Student Conduct*, COAM imposes both disciplinary and grade-related sanctions. Thus, by using various combinations of these two sanctions, COAM can impose sanctions that are commensurate with the severity of the academic misconduct. **Table 11** contains a summary of all of the disciplinary and grade-related sanctions imposed by COAM during the previous year.

Table 11.
Committee on Academic Misconduct
Disciplinary and Grade Sanctions, Combined Summary
2007-2008 Academic Year

Disciplinary Sanction	Grade Sanction	Rank 1	Rank 2	Rank 3	Rank 4	Rank M	Rank P	Other Ranks	Totals
Formal Reprimand	"0" on assignment	6	11	6	1	0	0	0	24
	Reduce grade on assignment by one full letter grade	0	0	0	1	0	0	0	1
	"E" in course	1	0	0	0	0	0	0	1
Subtotals									
		7	11	6	2	0	0	0	26
Disciplinary Probation (3 Quarters)	None (student withdrew)	0	1	0	0	0	0	0	1
	"0" on assignment	2	1	0	0	0	0	0	3
	"0" on assignment and a further reduction in the final course grade by one full letter grade	1	0	0	0	0	0	0	1
	"E" in course	0	3	0	0	0	0	0	3

Disciplinary Sanction	Grade Sanction	Rank 1	Rank 2	Rank 3	Rank 4	Rank M	Rank P	Other Ranks	Totals
Subtotals		3	5	0	0	0	0	0	8
Disciplinary Probation (4 Quarters)	None (student withdrew)	1	2	1	0	0	0	0	4
	"0" on assignment	5	7	2	1	0	0	0	15
	"0" on assignment and a further reduction in the final course grade by one full letter grade	18	19	17	0	0	0	0	54
	Reduction in final course grade by one full letter grade	0	0	4	0	0	0	0	4
	"E" in course	20	36	25	1	0	0	1	83
Subtotals		44	64	49	2	0	0	1	160
Disciplinary Probation (until graduation)	None (student withdrew)	0	0	3	2	0	0	0	5
	None (no grade sanction authorized)	0	0	0	0	2	1	0	3
	Reduction of final grade on assignment by one letter grade	0	0	0	1	0	0	0	1
	"0" on assignment	0	0	0	1	0	0	0	1
	"0" on assignment and a further reduction in the final course grade by one full letter grade	0	0	1	11	0	1	0	13
	Reduction in final grade by one full letter grade	0	0	0	3	1	0	0	4

Disciplinary Sanction	Grade Sanction	Rank 1	Rank 2	Rank 3	Rank 4	Rank M	Rank P	Other Ranks	Totals
	"E" in course	0	4	24	53	5	0	1	87
Subtotals		0	4	28	71	8	2	1	114
Suspension (1 Quarter)	None (not applicable)	0	0	0	1	0	0	0	1
	"O" on assignment	0	0	1	0	0	0	0	1
	Failure of candidacy exam	0	0	0	0	0	1	0	1
	"E" in the course	0	1	3	10	7	2	0	23
Subtotals		0	1	4	11	7	3	0	26
Suspension (2 Quarters)	"O" on assignment	0	0	1	0	0	0	0	1
	"E" in course	0	1	1	2	3	3	1	11
Subtotals		0	1	2	2	3	3	1	12
Suspension (3 Quarters)	None (not applicable)	0	0	1	0	0	0	0	1
	"E" in the course	0	2	0	1	0	0	0	3

Disciplinary Sanction	Grade Sanction	Rank 1	Rank 2	Rank 3	Rank 4	Rank M	Rank P	Other Ranks	Totals
Subtotals		0	2	1	1	0	0	0	4
Suspension (4 Quarters)	"E" in the course	0	0	1	0	0	0	0	1
Subtotals		0	0	1	0	0	0	0	1
Dismissal	None (not applicable)	0	0	0	1	0	1	0	2
	Fail candidacy exam	0	0	0	0	0	1	0	1
	"E" in the course	0	0	3	2	0	0	0	5
Subtotals		0	0	3	3	0	2	0	8
Total "In Violation"		54	88	94	92	18	10	3	359
Total "Not in Violation"		17	17	14	27	6	2	2	85
Total Cases		71	105	108	119	24	12	4	444