

# Committee on Academic Misconduct (COAM) Annual Report Summer Quarter, 2006 – Spring Quarter, 2007

Prepared by:  
Dr. Phoebe Spinrad, COAM Chairperson, 2006-2007  
Dr. Peter W. Pappas, COAM Coordinator

The University's *Code of Student Conduct* defines academic misconduct as "any activity that tends to compromise the academic integrity of the university, or subvert the educational process" (Faculty Rule 3335-23-04[A]). The Committee on Academic Misconduct (COAM) is charged with maintaining the University's academic integrity by investigating and adjudicating "all reported cases of student academic misconduct, with the exception of cases in a professional college having a published honor code, and [in instances where a student has violated the University's *Code of Student Conduct*] deciding upon suitable disciplinary action" (University Rule 3335-5-487[B]).

COAM is composed of 18 faculty members, seven graduate students (appointed by CGS), and seven undergraduate students (appointed by USG). The work of COAM is facilitated by the Coordinator who (1) receives and processes allegations of academic misconduct, (2) notifies students of allegations of academic misconduct, (3) consults with students and faculty regarding allegations of academic misconduct, (4) schedules hearings to resolve allegations of academic misconduct, and (5) notifies students and faculty of the outcomes of these hearings.

Every student accused of academic misconduct has the right to a hearing before a panel of COAM. A panel consists of at least four members of COAM, and the rules require that each panel have at least two faculty representatives and one student representative. The panel serves as an impartial hearing body that hears evidence and determines (1) if a student has violated the University's *Code of Student Conduct* and (2) an appropriate sanction in cases where a student is found "in violation." If a student agrees with the allegations of academic misconduct and waives his/her right to a hearing, he/she may have the allegations resolved as an administrative decision. For an administrative decision, a member of COAM serves as a hearing officer and determines the sanctions.

## I. SUMMARY OF CASES RESOLVED

During the 2006-2007 academic year, COAM resolved 535 cases of alleged academic misconduct. This represents an increase of 10 cases (<2%) over the previous year. Of the cases resolved, 226 (42%) were resolved as administrative decisions and 309 (58%) were resolved as panel hearings (**Table 1**). Females and males represented 39% and 61%, respectively, of the cases resolved (**Table 2**).

**Table 1.**  
**Committee on Academic Misconduct**  
**Summary of Total Cases Resolved and Method of Resolution**  
**2006-2007 Academic Year**

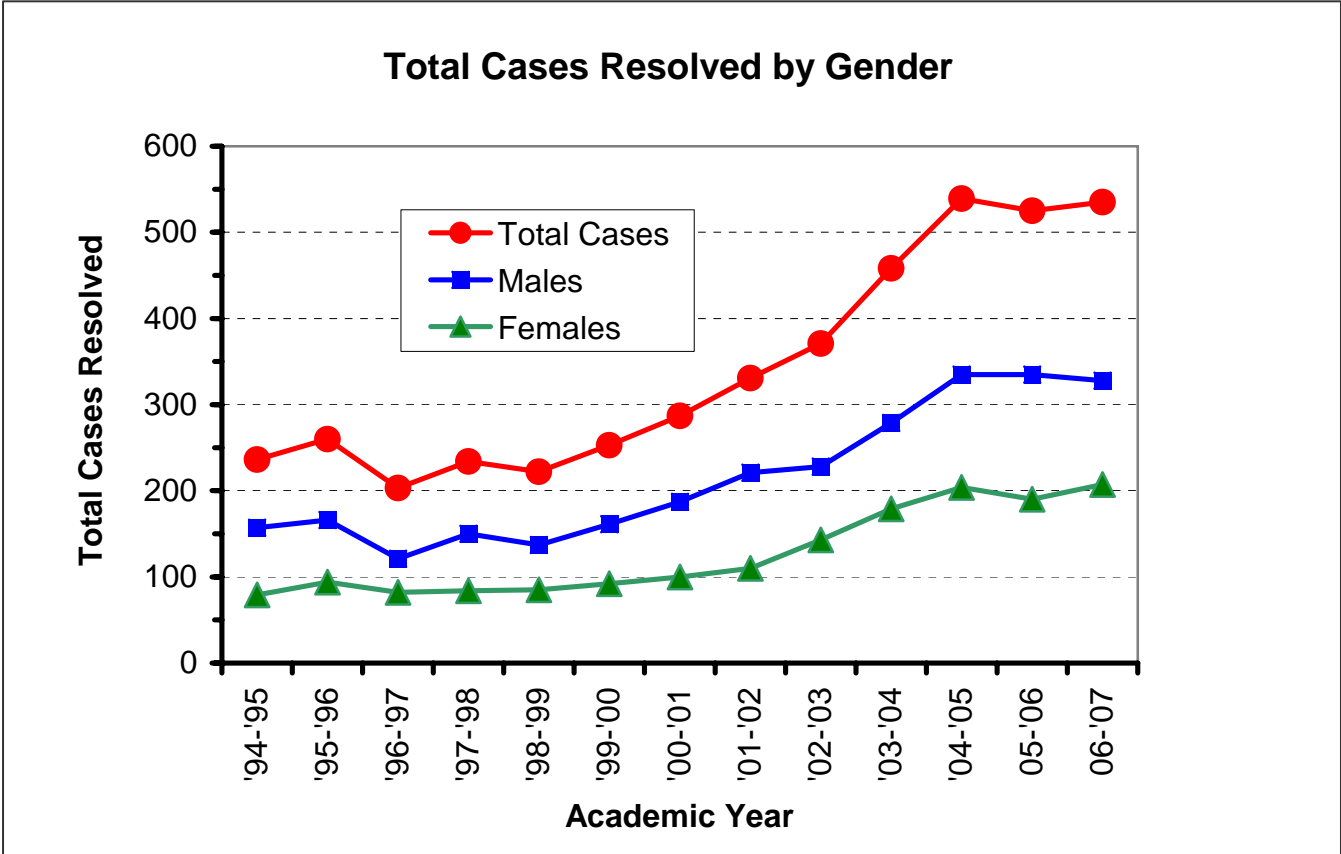
	Number of Cases	% of Total Cases
Administrative Decisions	226	42.2
Panel Hearings	309	57.8
<b>Totals</b>	<b>535</b>	<b>100.0</b>

**Table 2.**  
**Committee on Academic Misconduct**  
**Summary of Total Cases Resolved and Student's Gender**  
**2006-2007 Academic Year**

Gender	Number of Cases	% of Total Cases
Female	207	38.7
Male	328	61.3
<b>Totals</b>	<b>535</b>	<b>100.0</b>

**Figure 1** summarizes the total cases resolved by COAM and the distribution of these cases between males and females for the past 13 academic years. During this period, the number of cases resolved by COAM has increased substantially. However, the distribution of cases between males and females has not changed dramatically, with males accounting routinely for approximately 60% of the cases resolved by COAM.

**Figure 1.**  
**Committee on Academic Misconduct**  
**Summary of Total Cases Resolved and Student's Gender**  
**Academic Years 1994-1995 through 2006-2007**



Of the 535 cases resolved by COAM this past year, 77 (14%) and 458 (86%) resulted in verdicts of “not in violation” and “in violation,” respectively, and the rates at which males and females were found “in violation” of the *Code of Student Conduct* were approximately equal (**Table 3**).

**Table 3.**  
**Committee on Academic Misconduct**  
**Distribution of Cases Resolved Based on Students' Gender and Verdict**  
**2006-2007 Academic Year**

Gender	Students Found "Not In Violation"	Students Found "In Violation"	Total Cases	% In Violation (% of Total for Gender)
Female	24	183	207	88.4
Male	53	275	328	83.8
<b>Totals</b>	<b>77</b>	<b>458</b>	<b>535</b>	<b>85.6</b>

## II. SUMMARY OF ACADEMIC MISCONDUCT CHARGES

When allegations of academic misconduct arise, a student often does not know or understand what he/she has allegedly done wrong. Since COAM desires that the hearing process be an educational process, the Coordinator charges the student with violating the *Code of Student Conduct* using terminology that explains the nature of the behavior that lead to the allegations. **Table 4** summarizes information on academic misconduct charges for the 2006-2007 academic year. The left column is a list of the charges used most commonly by COAM. The "Number of Students" column lists the total number of students charged with a particular violation, and the "% of Total" column lists the "Number of Students" as a percentage of the total charges (1002). The last two columns list the number of students found "in violation" (Number IV) of each charge and the number of students found "in violation" of each charge as a percentage of the total number of students charged. For example, of 171 students charged with plagiarism, 163 (95.3%) were found "in violation."

Students are often charged with and found "in violation" of more than one charge. Thus, the total number of charges (1002) exceeds the total cases resolved by COAM (535), and the total for "Number IV" (742) exceeds the actual number of students found "in violation" (458).

The relatively low values for the percentages of students found "in violation" of unauthorized collaboration and copying are misleading. They result because COAM often treats the charges of "copying" and "unauthorized collaboration" as mutually exclusive. In many of the cases where COAM receives information alleging that one student may have copied the work of another student, it's not clear which student (if

any) copied and whether or not there was collusion (working together in an unauthorized manner). Thus, in many of these cases, all of the students involved are charged with copying **and** unauthorized collaboration, but, if found “in violation,” they are found “in violation” of only copying **or** unauthorized collaboration.

**Table 4.**  
**Committee on Academic Misconduct**  
**Summary of Charges for Which Students Were Found**  
**“In Violation” of the University’s *Code of Student Conduct***  
**2006-2007 Academic Year**

Charge	Number of Students	% of Total	Number IV	% IV
Plagiarism (submitting plagiarized work in fulfillment of an academic assignment)	171	17.1	163	95.3
Copying (attempting to copy) the work of another student in an unauthorized manner and misrepresenting (attempting to misrepresent) it as one's own work	254	25.3	132	52.0
Unauthorized collaboration (any instance where two or more students work together and/or share information in a manner that is unauthorized)	229	22.9	151	65.9
Failure to comply with course/program policies and/or guidelines	218	21.8	187	85.8
Submission of work not performed in a course	41	4.1	37	90.2
Engaging in activities that place other students at a disadvantage.	7	0.7	6	95.5
Possession and/or use of unauthorized materials during an examination or other course activity	22	2.2	21	95.5
Forgery	15	1.5	13	86.7

Charge	Number of Students	% of Total	Number IV	% IV
Alteration and resubmission of course materials in an attempt to change the earned credit or grade	12	1.2	10	83.3
Requesting and/or receiving unauthorized assistance during an examination, course activity, and/or academic assignment	20	2.0	10	50.0
Serving as or enlisting the assistance of a substitute during the completion of an academic assignment or other course activity	6	0.6	6	100.0
Other charges	7	0.7	6	85.7
<b>Totals</b>	<b>1002</b>	<b>100.1</b>	<b>742</b>	

### III. SUMMARY OF CASES BASED ON STUDENT'S COLLEGE OF ENROLLMENT AND REFEREEING DEPARTMENT

Over 20 enrollment units on campus were represented by the cases resolved by COAM during the past year (**Table 5**), but the students from four enrollment units (College of Engineering [ENG], Undergraduate Student Academic Services [USAS], College of Social and Behavioral Sciences [SBS], and College of Business [BUS]), when combined, accounted for nearly 55% of all cases.

**Table 5.**  
**Committee on Academic Misconduct**  
**Distribution of Cases Based on Student's Enrollment Unit**  
**2006-2007 Academic Year**

Enrollment Unit	Total for Enrollment Unit	% of All Cases
AGR (College of Food, Agriculture and Environmental Sciences)	9	1.7
AHR (School of Architecture)	2	0.4
AMP (School of Allied Medical Professions)	12	2.2
ART (College of Art)	7	1.3
ASC (Colleges of the Arts and Sciences)	8	1.5
ATI (Agricultural Technical Institute)	5	0.9
BIO (College of Biological Sciences)	44	8.2
BUS (College of Business)	79	14.8
CED (Continuing Education)	3	0.6
DHY (Dental Hygiene)	1	0.2
EDU (College of Education)	5	0.9
EHE (College of Education and Human Ecology)	41	7.7
ENG (College of Engineering)	65	12.1
EXP (Exploration Program)	27	5.0
GRD (Graduate School)	28	5.2
HUM (College of Humanities)	23	4.3
JUR (School of Journalism and Communications)	1	0.2
MPS (College of Mathematical and Physical Sciences)	6	1.1
MUS (School of Music)	3	0.6
NUR (College of Nursing)	4	0.7
PHR (College of Pharmacy)	8	1.5

Enrollment Unit	Total for Enrollment Unit	% of All Cases
SBS (College of Social and Behavioral Sciences)	77	14.4
SWK (College of Social Work)	6	1.1
USAS (Undergraduate Student Academic Services)	71	13.3
<b>Totals</b>	<b>535</b>	<b>100.0</b>

The cases heard by COAM during the past year originated from over 60 departments across the University (**Table 6**), with the combined cases from Computer Science and Engineering (17.2% of all cases), Chemistry (10.1%), History (7.3%), and Engineering (4.1%) accounting for nearly 40% of the total cases.

**Table 6.**  
**Committee on Academic Misconduct**  
**Distribution of Cases Based on Referring Department**  
**2006-2007 Academic Year**

Course (Department)	No. of Cases	% of Total
ACCT&MIS [Accounting and Management Information Systems]	9	1.7
AFAM&AST [African American and African Studies]	3	0.6
ANTHROP [Anthropology]	3	0.6
ART	1	0.2
ART EDUC [Art Education]	6	1.1
BIOLOGY	15	2.8
BIOMED E [Biomedical Engineering]	1	0.2
BUS TEC [Business Technology]	3	0.6
BUS-M&L [Business Administration: Marketing and Logistics]	5	0.9



Course (Department)	No. of Cases	% of Total
BUS-MGT [Business Administration: Management Sciences]	9	1.7
CHBE [Chemical and Biomolecular Engineering]	3	0.6
CHEM [Chemistry]	54	10.1
CIVIL EN [Civil Engineering]	4	0.7
COMM [Communications]	5	0.9
COMP STD [Comparative Studies in the Humanities]	1	0.2
CS&E [Computer Science and Engineering]	92	17.2
ECE [Electrical and Computer Engineering]	1	0.2
ECON [Economics]	4	0.7
EDU P&L [Education: Educational Policy and Leadership]	5	0.9
EDU PAES [Education: Physical Activity and Education Services]	11	2.1
EDU T&L [Education: Teaching and Learning]	5	0.9
EEOB [Evolution, Ecology, and Organismal Biology]	6	1.1
EN GRAPH [Engineering Graphics]	2	0.4
ENG TECH [Engineering Technology]	1	0.2
ENGINEER [Engineering]	22	4.1
ENGLISH	20	3.7
FA&B ENG [Food, Agricultural, and Biological Engineering]	1	0.2
FRENCH	6	1.1
GEOG [Geography]	15	2.8
GEOL SCI [Geological Sciences]	2	0.4
GERMAN	3	0.6
HIST ART [History of Art]	3	0.6
HISTORY	39	7.3
HORT TEC (Horticultural Technology)	1	0.2
HUMN NTR [Human Nutrition and Food Management]	2	0.4

Course (Department)	No. of Cases	% of Total
IGBP (Integrated Biomedical Science Graduate Program)	1	0.2
IND ENG [Industrial and Systems Engineering]	9	1.7
LINGUIST [Linguistics]	7	1.3
MATH [Mathematics]	12	2.2
MATSC&EN [Materials Science and Engineering]	10	1.9
MBA [Masters of Business Administration]	3	0.6
MECH ENG [Mechanical Engineering]	2	0.4
MED TECH [Medical Technology]	1	0.2
MUSIC	10	1.9
NURSING	1	0.2
OTHER	3	0.6
PHARMACY	1	0.2
PHILOS [Philosophy]	6	1.1
PHYSICS	3	0.6
POLIT SC [Political Science]	17	3.2
PSYCH [Psychology]	10	1.9
RURL SOC [Rural Sociology]	1	0.2
RUSSIAN	11	2.1
SLAV&EES [Slavic and East European Studies]	2	0.4
SOC WORK [Social Work]	8	1.5
SOCIOL [Sociology]	17	3.2
SPANISH	10	1.9
STAT [Statistics]	8	1.5
THEATRE	5	0.9
TXTL&CLO [Textiles and Clothing]	4	0.7
USAS [Undergraduate Student Academic Services]	3	0.6
WOM STDS [Women's Studies]	7	1.3
<b>TOTALS</b>	<b>535</b>	<b>100.0</b>

#### IV. SUMMARY OF CASES BASED ON STUDENT'S RANK AND COURSE LEVEL

Nearly 45% of the cases resolved by COAM during the past year were the result of allegations of misconduct in 100-level courses. Progressively fewer cases resulted from allegations in progressively higher-level courses (**Table 7**).

**Table 7.**  
**Committee on Academic Misconduct**  
**Distribution of Cases Based on Course Level (Number)**  
**2006-2007 Academic Year**

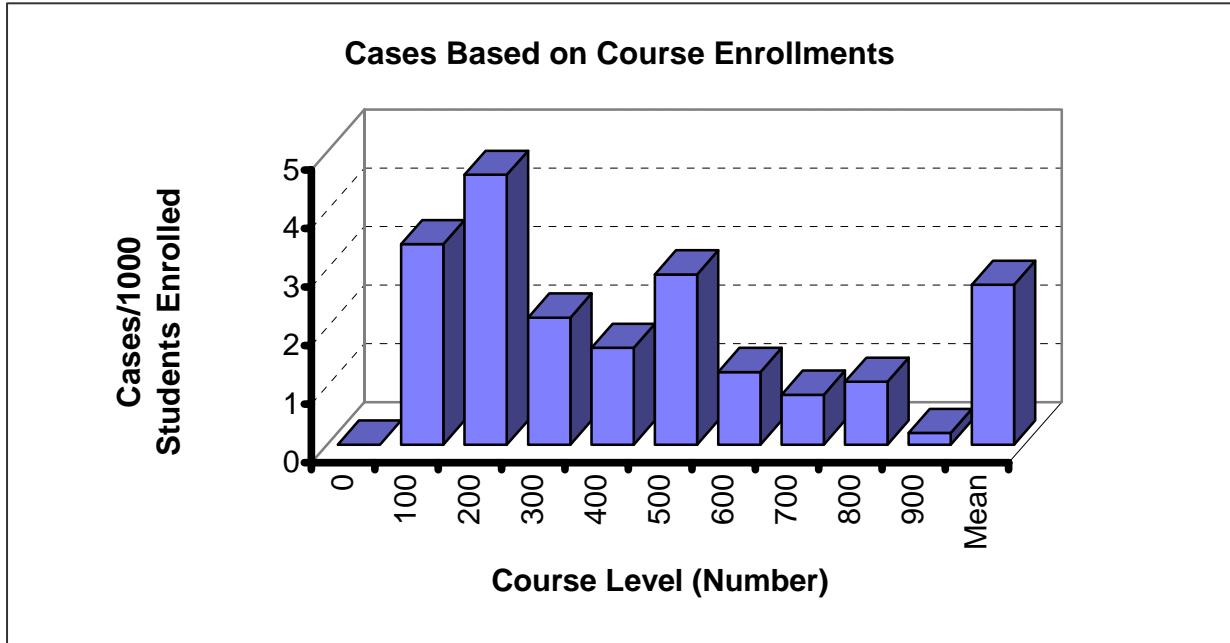
(N/A in the following table refers to those cases in which the alleged academic misconduct did not take place in a course in which the student was enrolled.)

Course Level	Cases	% of Total
0	0	0.0
100	239	44.7
200	138	25.8
300	38	7.1
400	18	3.4
500	54	10.1
600	22	4.1
700	12	2.2
800	10	1.9
900	1	0.2
N/A	3	0.6
<b>Totals</b>	<b>535</b>	<b>100.0</b>

Although 100-level courses accounted for nearly 45% of the allegations of academic misconduct, the “rate” of allegations (i.e., the number of cases based on the total numbers of students enrolled) was actually highest in 200-level courses (**Figure 2**).

**Figure 2.**  
**Committee on Academic Misconduct**  
**Distribution of Cases Based on Course Level and Enrollment**  
**2006-2007 Academic Year**

(For each course-level, the total number of cases for that level was divided by the total number of students enrolled in all courses for that level, and the resulting number was multiplied by 1000. Enrollment data for Autumn Quarter, 2006, were obtained from the Registrar's Office and used for these calculations.)



**Table 8** summarizes the cases resolved for undergraduate students only (i.e., ranks 1 through 4). The data demonstrate that students of progressively higher class ranks tended to be charged with academic misconduct in progressively higher level courses. For example, almost all cases involving rank 1 students occurred in 100 and 200-level courses (111 of 116 cases = 96%), while 60% of the cases involving rank 4 students occurred in courses at the 300-level and above (83 of 132 cases = 63%).

**Table 8.**  
**Committee on Academic Misconduct**  
**Distribution of Cases Based on Student Rank and Course Level**  
**2006-2007 Academic Year**

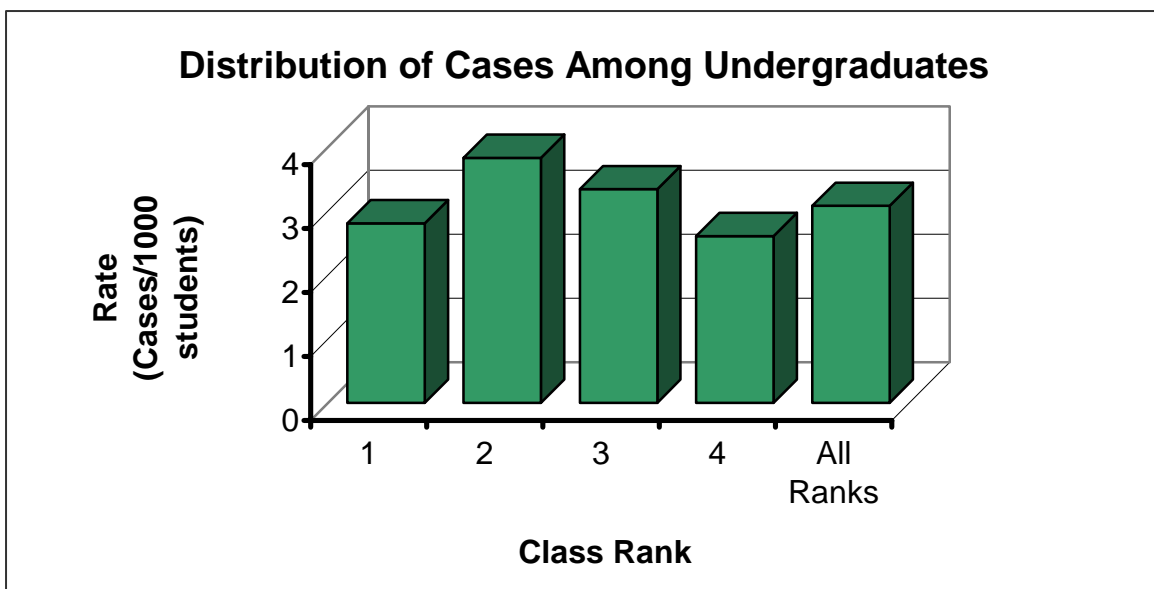
(The following table includes data for only ranks 1, 2, 3, and 4 students who were charged with academic misconduct in a formal course. Thus, the data in this table represent 495 of the 535 total cases resolved during the past academic year.)

Level	Class Rank				Totals
	1	2	3	4	
0	0	0	0	0	0
100	88	61	49	34	232
200	23	62	36	15	136
300	4	9	9	16	38
400	1	3	4	9	17
500	0	0	11	38	49
600	0	0	2	14	16
700	0	0	0	6	6
800	0	0	1	0	1
<b>Totals</b>	<b>116</b>	<b>135</b>	<b>112</b>	<b>132</b>	<b>495</b>

The data in **Table 8** also show that the cases were distributed approximately equally among the student ranks. However, when the data were calculated as rates (i.e., calculated on the basis of the number of students enrolled for each class rank), the highest rate of cases involved rank 2 students and the lowest rate of cases involved rank 4 students (Fig. 3).

**Figure 3.**  
**Committee on Academic Misconduct**  
**Distribution of Cases for Undergraduate Students**  
**Based on Class Rank and Enrollment.**  
**2006-2007 Academic Year.**

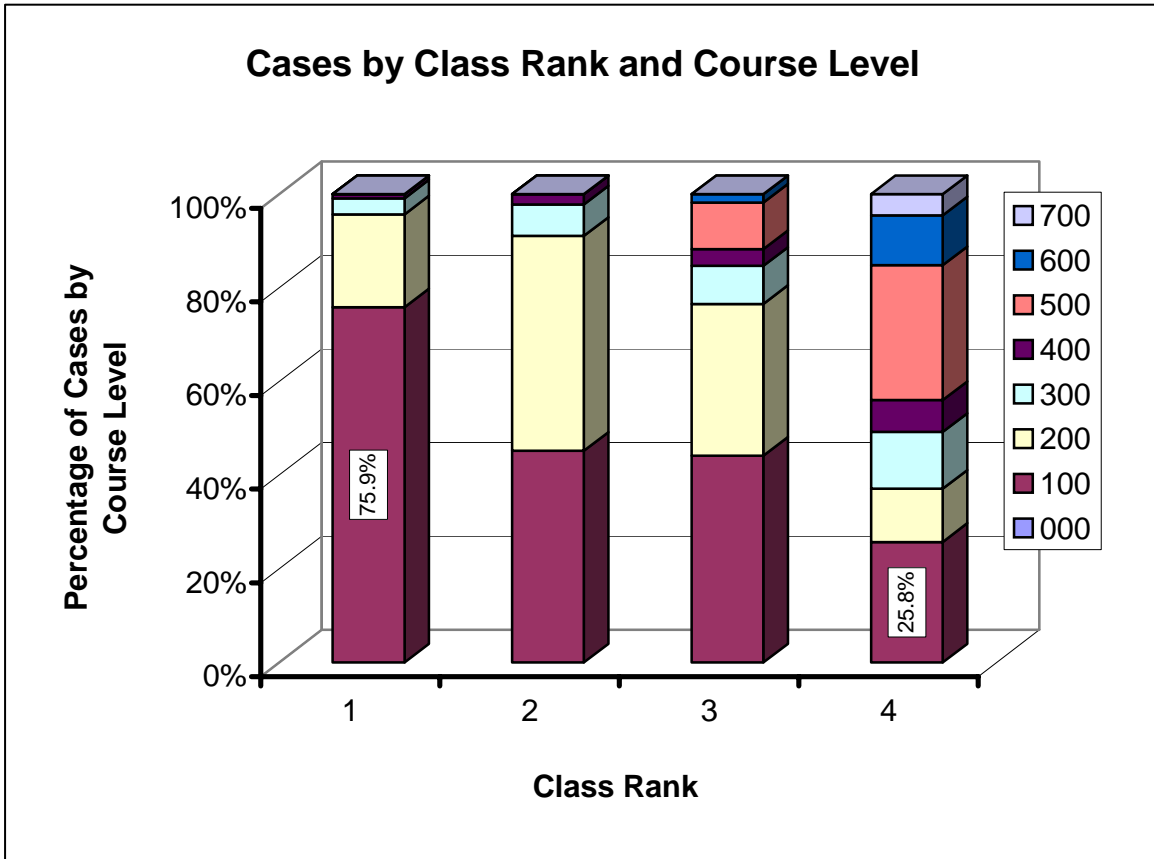
(For this Figure, the number of cases for each rank [see Table 8] was divided by the total enrollment for that rank and then multiplied by 1000. The “All Ranks” bar represents the mean value for ranks 1 through 4. Enrollment figures for the Autumn Quarter, 2006, for each rank were obtained from the Registrar’s Office and used to calculate these data.)



**Figure 4** summarizes the distribution of cases among different class ranks and course levels. This figure demonstrates clearly that a majority of allegations involving rank 1 occurred in 100-level (75.9%) courses. Also notable is the observation that 100-level courses accounted for a high percentage of academic misconduct cases involving rank 4 students (25.8%).

**Figure 4.**  
**Distribution of Cases by Course Level and Student's Class Rank**  
**2006-2007 Academic Year**

(For this Figure, the data in **Table 8** for each course level within each class rank were calculated as a percentage of the total cases for that class rank, and the data for the course levels within each class rank were plotted as cumulative percentages.)



## VI. Summary of Disciplinary and Grade Sanctions

When COAM finds that a student has violated the University's *Code of Student Conduct*, COAM imposes sanctions. The sanction always includes a disciplinary component, and, in a majority of cases, a grade-related component.

The disciplinary sanctions imposed by COAM and the numbers of cases involved are summarized in **Table 9**. As these data demonstrate, most students found in violation of the *Code of Student Conduct* received a sanction of "disciplinary probation."

**Table 9.**  
**Committee on Academic Misconduct**  
**Summary of Disciplinary Sanctions**  
**2006-2007 Academic Year**

(Of the 535 cases heard during the 2006-2007 Academic Year, 458 resulted in a finding of "In Violation," and only these resulted in a disciplinary sanction.)

Disciplinary Sanction	Number of Cases	% of Cases
Formal reprimand	9	2.0
Disciplinary probation (range = 1 quarter to "until graduation")	402	87.8
Suspension (range = 1 to 4 quarters)	37	8.1
Dismissal	10	2.2
<b>Totals</b>	<b>458</b>	<b>100.0</b>

The grade sanctions imposed by COAM and the numbers of cases involved are summarized in **Table 10**. As these data demonstrate, most students found "in violation" of the University's *Code of Student Conduct* fail the course in which the misconduct occurred.



**Table 10.  
Committee on Academic Misconduct  
Summary of Grade Sanctions  
2006-2007 Academic Year**

(Of the 535 cases heard during the 2006-2007 Academic Year, 458 resulted in a finding of "In Violation." In 15 of these cases, no grade sanction was authorized for the following reasons: a grade sanction was not applicable [3 cases]; the student withdrew from the course prior to resolving the allegations [12 cases].)

Grade Sanction	Number of Cases	% of Cases
None	15	3.3
Authorization for a "0" on the assignment	44	9.6
Authorization for a "0" on the assignment and then a reduction in the student's final grade by one full letter grade	98	21.4
Authorization for a final grade of "E" in the course	290	63.3
Other	11	2.4
<b>Totals</b>	<b>458</b>	<b>100.0</b>

As noted above, when a student is found "in violation" of the University's *Code of Student Conduct*, COAM imposes both disciplinary and grade-related sanctions. Thus, by using various combinations of these two sanctions, COAM can impose sanctions that are commensurate with the severity of the academic misconduct. **Table 11** contains a summary of all of the disciplinary and grade-related sanctions imposed by COAM during the previous year.

**Table 11.**  
**Committee on Academic Misconduct**  
**Disciplinary and Grade Sanctions, Combined Summary**  
**2006-2007 Academic Year**

Disciplinary Sanction	Grade Sanction	Rank 1	Rank 2	Rank 3	Rank 4	Rank M	Rank P	Other Ranks	Totals
Formal Reprimand	Reduce grade on assignment by one full letter grade	0	0	2	0	0	0	0	2
	"0" on assignment	5	1	1	0	0	0	0	7
Subtotals		5	1	3	0	0	0	0	9
Disciplinary Probation (2 Quarters)	"0" on assignment	2	2	0	0	0	0	0	4
Subtotals		2	2	0	0	0	0	0	4
Disciplinary Probation (3 Quarters)	None (student withdrew)	1	0	0	0	0	0	0	1
	"0" on assignment and a further reduction in the final course grade by one full letter grade	1	1	0	0	0	0	0	2

Disciplinary Sanction	Grade Sanction	Rank 1	Rank 2	Rank 3	Rank 4	Rank M	Rank P	Other Ranks	Totals
	"E" in course	4	4	2	0	0	0	0	10
Subtotals									
		6	5	2	0	0	0	0	13
Disciplinary Probation (4 Quarters)									
	None (student withdrew)	2	4	4	0	0	0	0	10
	"E" on assignment	1	0	0	0	0	0	0	1
	"0" on assignment	14	8	6	0	0	0	0	28
	"0" on assignment and a further reduction in the final course grade by one full letter grade	27	26	15	1	0	0	1	70
	Reduction in final course grade by one full letter grade	1	1	1	1	0	0	0	4
	"E" in course	38	52	37	6	0	0	6	139
Subtotals									
		83	91	63	8	0	0	7	252
Disciplinary Probation (until graduation)									
	None (student withdrew)	0	0	0	1	0	0	0	1
	Reduction of final grade on assignment by one letter grade	0	0	1	0	0	0	0	1
	"0" on assignment	0	0	0	7	0	0	0	7
	"0" on assignment and a further reduction in the final course grade by one full letter grade	0	1	3	18	2	0	0	24

Disciplinary Sanction	Grade Sanction	Rank 1	Rank 2	Rank 3	Rank 4	Rank M	Rank P	Other Ranks	Totals
	Failure of candidacy exam	0	0	0	0	0	1	0	1
	Reduction in final grade by one full letter grade	0	0	0	1	0	0	0	1
	"E" in course	1	6	15	69	1	5	1	98
<b>Subtotals</b>									
		1	7	19	96	3	6	1	133
Suspension (1 Quarter)	None (not applicable)	0	1	0	0	0	0	0	1
	Failure of candidacy exam	0	0	0	0	0	1	0	1
	"E" in the course	6	3	4	3	6	6	1	29
<b>Subtotals</b>									
		6	4	4	3	6	7	1	31
Suspension (2 Quarters)	"E" in course	1	0	1	1	2	1	0	6
<b>Subtotals</b>									
		1	0	1	1	2	1	0	6
Dismissal	None (not applicable)	0	0	0	0	0	1	0	1
	"E" in the course	1	1	1	6	0	0	0	9

Disciplinary Sanction	Grade Sanction	Rank 1	Rank 2	Rank 3	Rank 4	Rank M	Rank P	Other Ranks	Totals
Subtotals		1	1	1	6	0	1	0	10
Total "In Violation"		105	111	93	114	11	15	9	458
Total "Not in Violation"		11	24	19	18	1	1	3	77
Total Cases		116	135	112	132	12	16	12	535